

Features

- ◆ Smallest encapsulated 30 W converter
- ◆ 2" x 1" x 0.4" shielded metal package
- ◆ Ultra wide 4:1 input voltage range
- ◆ Single- dual- and triple output models
- ◆ Very high efficiency up to 89%
- ◆ Operating temperature range
-40 °C to +75 °C
- ◆ I/O isolation 1500 VDC
- ◆ Over Temperature Protection
- ◆ Under Voltage Lockout
- ◆ Short circuit protection
- ◆ Remote ON/Off
- ◆ Adjustable output voltage



The TEN 30WIN series is a family of high performance 30W dc-dc converter modules featuring ultra wide 4:1 input voltage ranges in a compact low profile case with industry-standard footprint. Standard features include remote On/Off, output voltage trimming, over voltage protection, under voltage lockout, over temperature and short circuit protection.

Typical applications for these products are battery operated equipment and distributed power architectures in communication and industrial electronics, everywhere where isolated, tightly regulated voltages are required and space is limited on the PCB.

Models

Order code	Input voltage range	Output 1	Output 2	Output 3	Efficiency typ..
TEN 30-2407WIN	9 – 36 VDC (24 VDC nominal)	1.5 VDC / 8.0 A			82 %
TEN 30-2409WIN		2.5 VDC / 8.0 A			84 %
TEN 30-2410WIN		3.3 VDC / 8.0 A			87 %
TEN 30-2411WIN		5.1 VDC / 6.0 A			88 %
TEN 30-2412WIN		12 VDC / 2.5 A			89 %
TEN 30-2413WIN		15 VDC / 2.0 A			89 %
TEN 30-2421WIN		+5 VDC / 3.0 A	-5 VDC / 3.0 A		88 %
TEN 30-2422WIN		+12 VDC / 1.25 A	-12 VDC / 1.25 A		86 %
TEN 30-2423WIN		+15 VDC / 1.0 A	-15 VDC / 1.0 A		86 %
TEN 30-2433WIN		3.3 VDC / 5.0 A	+12 VDC / 0.42 A	-12 VDC / 0.42 A	85 %
TEN 30-2434WIN		3.3 VDC / 5.0 A	+15 VDC / 0.33 A	-15 VDC / 0.33 A	85 %
TEN 30-2431WIN		5 VDC / 4.0 A	+12 VDC / 0.42 A	-12 VDC / 0.42 A	87 %
TEN 30-2432WIN		5 VDC / 4.0 A	+15 VDC / 0.33 A	-15 VDC / 0.33 A	87 %
TEN 30-4807WIN		18 – 75 VDC (48 VDC nominal)	1.5 VDC / 8.0 A		
TEN 30-4809WIN	2.5 VDC / 8.0 A				84 %
TEN 30-4810WIN	3.3 VDC / 8.0 A				87 %
TEN 30-4811WIN	5.1 VDC / 6.0 A				88 %
TEN 30-4812WIN	12 VDC / 2.5 A				89 %
TEN 30-4813WIN	15 VDC / 2.0 A				89 %
TEN 30-4821WIN	+5 VDC / 3.0 A		-5 VDC / 3.0 A		88 %
TEN 30-4822WIN	+12 VDC / 1.25 A		-12 VDC / 1.25 A		86 %
TEN 30-4823WIN	+15 VDC / 1.0 A		-15 VDC / 1.0 A		86 %
TEN 30-4833WIN	3.3 VDC / 5.0 A		+12 VDC / 0.42 A	-12 VDC / 0.42 A	86 %
TEN 30-4834WIN	3.3 VDC / 5.0 A		+15 VDC / 0.33 A	-15 VDC / 0.33 A	86 %
TEN 30-4831WIN	5 VDC / 4.0 A		+12 VDC / 0.42 A	-12 VDC / 0.42 A	88 %
TEN 30-4832WIN	5 VDC / 4.0 A		+15 VDC / 0.33 A	-15 VDC / 0.33 A	88 %

Output Specifications

Minimum load	single and dual output models: not required triple output models: 10% of rated max current (operation at lower load condition will not damage the converters. However, they may not meet all listed specifications)
Capacitive load output models	1.5 – 3.3 V models: 20'000 μF max. 5.1 V models: 14'000 μF max. 12 & 15 V models: 2'000 μF max. \pm 5 V models: \pm3'000 μF max. other dual output models: \pm1'300 μF max. 3.3 V triple output models: 15'000 / \pm220 μF max. (main / auxiliary) 5.1 V triple output models: 8'000 / \pm220 μF max. (main / auxiliary)

General Specifications

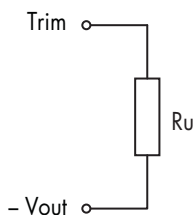
Temperature ranges	– Operating – Case temperature – Storage	–40 °C to +75 °C +105 °C max. –55 °C to +125 °C
Derating		3.2 %/K above 60 °C
Humidity (non condensing)		95 % rel. H max.
Reliability, calculated MTBF (MIL-HDBK-217 F)		tba
Isolation voltage (60 sec)	– Input / Output	1500 VDC
Isolation resistance	– Input / Output	>1000 M Ohm
Isolation capacity	– Input / Output	1500 pF max.
Remote On/Off	– On: – Off: – Off idle current:	3.0... 12 VDC or open circuit. 0 ... 1.2 VDC or short circuit pin 3 and pin 2 3 mA max.
Switching frequency (fixed)		400 kHz typ. (Pulse width modulation PWM)
Vibration		10 – 55 Hz, 10G, 30 minutes along X,Y,Z
Safety standards		UL 60950-1, EN 60950-1, IEC 60950-1
Safety approvals		UL /cUL File pending

Note 1:

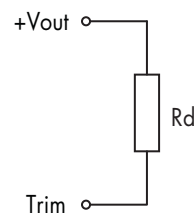
In order to meet conducted emissions EN55022-A and EN55011-A a capacitor between +Vin and -Vin has to be installed. The capacitor should be capable to handle 1 A ripple current. A suggestion is KY series of Nippon chemi-con, 330 μ F/50V, ESR 55mOhm for 24 Vin models and 220 μ F/100V, ESR 48 mOhm for 48 Vin models.

Output Voltage Adjustment

Trim up



Trim down



Resistor values to be advised

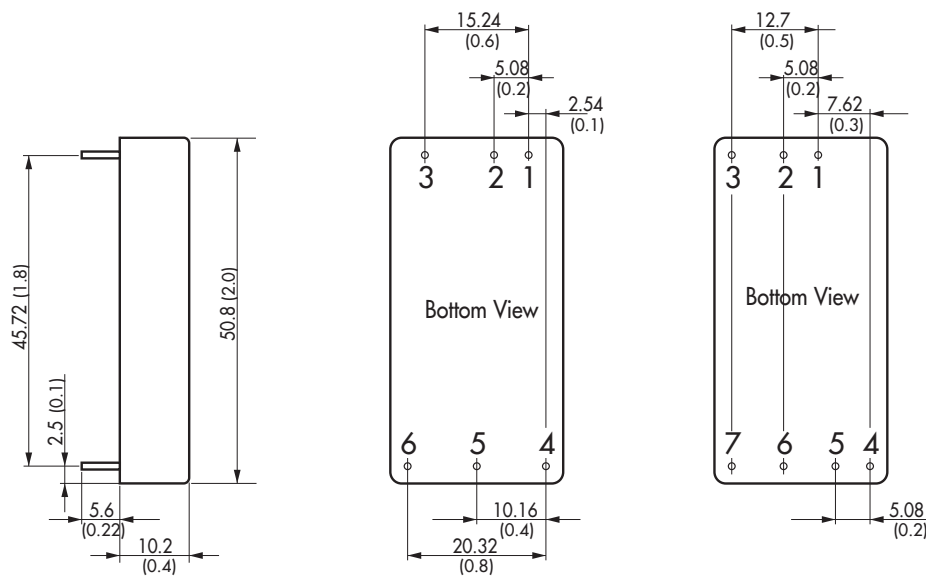
Physical Specifications

Case material	copper, nickel plated
Baseplate material	none conductive FR4
Potting material	epoxy (UL 94V-0 -rated)
Weight	31 g (1.1 oz)
Soldering temperature	max. 265 °C / 10 sec.

Outline Dimensions

Single- and dual output models

Triple output models



Dimensions in [mm], () = Inch
 Pin diameter: 1.0 ±0.05 (0.04 ±0.002)
 Pin pitch tolerances: ±0.35 (±0.014)
 Case tolerances: ±0.5 (±0.02)

Pin-Out

Pin	Single	Dual	Triple
1	+Vin (Vcc)	+Vin (Vcc)	+Vin (Vcc)
2	-Vin (GND)	-Vin (GND)	-Vin (GND)
3	Remote On/Off	Remote On/Off	Remote On/Off
4	Output 1	Output 1	Output 2
5	Common	Common	Output 3
6	Trim	Output 2	Common
7	No pin	No pin	Output 1

Specifications can be changed any time without notice.