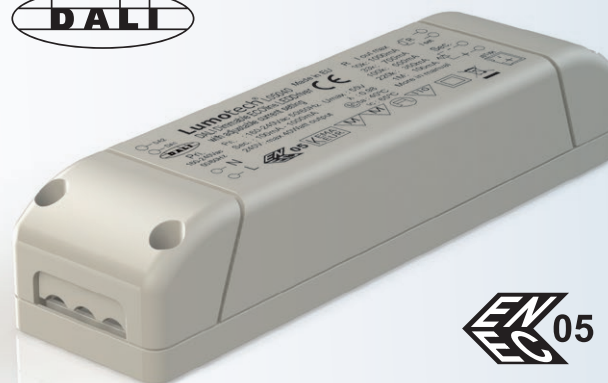


## Ecoline 40 W DALI dimmable series L05040

### Lumotech technology

Lumotech LED drivers are designed to efficiently power and control LED solutions for general lighting applications. System reliability is enhanced by features that protect the connected LED module, e.g. hot wiring, reduced ripple current and thermal derating. In the coming years LEDs will continue to increase in efficiency, creating new challenges for OEMs. With Lumotech LED drivers, flexibility in luminaire design is assured thanks to adjustable current outputs.



### Benefits

- Designed with system reliability in mind:
  - Low inrush current
  - Low output current ripple
  - Short and open circuit protection, overload and over voltage protection
  - Thermal protection (automatic current limiter)
  - Support for hot-swapping of LEDs >3 W
  - Excellent EMC behavior
- Future-proof flexibility - industry leading voltage and current range enabling seamless support of LED generations and minimizing supply chain complexity

### Product features

- Wide output voltage range 7 - 55 Vdc
- Wide range of current settings 100 - 1000 mA
- DALI dimmable
- Max inrush current 0.4 A
- Low output current ripple (<1 %) at 100 Hz
- Active output overvoltage protection
- Up to 87 % efficiency across a wide range of loads
- Power factor 0.98
- SELV
- ENEC certified
- Engineered and manufactured in Europe

### 5 year warranty

Lumotech takes pride in the quality of its products. We not only develop all products in house, they are also produced in our own manufacturing plants to ensure guaranteed reliability and performance. Lumotech drivers come with the assurance of a 5 year warranty. After all, with typical LED lifetimes of 50,000 hours, it is critical to have a power supply with equal reliability.



### Certificates and standards

- ENEC05, CE
- EN55015 / EN61000-3-2 / EN61347-2-13 / EN61347-1 / EN61547 / EN62384 / SELV

### Classifications



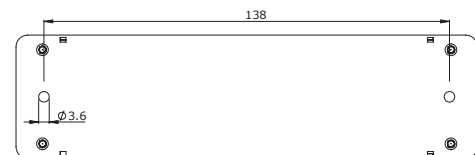
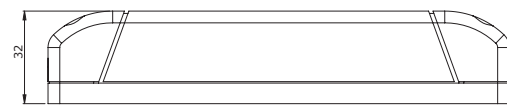
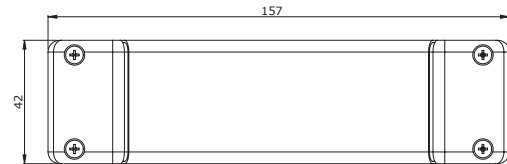
## Specific technical data

Type	Efficiency at full load	Output current	Output voltage range	Open circuit output voltage	Max. output power	Dimming
L05040	87 %	100 - 1000 mA	7 - 55 Vdc	64 Vdc	40 W	DALI

## Technical data

Rated supply voltage	220 - 240 Vac
Input voltage	160 - 240 Vac
Mains frequency	50/60 Hz
Output current tolerance	5 %
100 Hz ripple current at full load	<1 %
Power factor at full load	0.98
Standby power	400 mW
Nominal line current at 240 Vac	195 mA
Dimming method	linear
Minimum dim level	15 mA - off
Output voltage setting time	1 second
Output isolation	SELV
Surge protection (diff. / comm.)	2 kV / 6 kV
IP classification	IP 20
Circuit lifetime	50,000 hrs at Tc max.
Case dimensions	157 x 42 x 32 mm

## Dimensions



## Inrush current

Mains max. peak inrush at full load	0.4 A*
-------------------------------------	--------

\* Tested at 240 Vac, on phase 60° with TTI HA1600A analyzer.

## Maximum number of drivers on automatic circuit breakers

Automatic circuit breaker type	C10	C13	C16	C20	B10	B13	B16	B20
L05040	44	57	70	87	44	57	70	87

## Thermal specifications

Ambient temperature range (Ta)	-20 to 40°C *
Maximum case temperature (Tc)	< 65°C **
Storage temperature range	-20 to 50°C

\* 0 to 50°C when mounted on a heat conductive surface

\*\* 80°C when mounted on a heat conductive surface at Ta 50°C

## Ordering data

Part	Part number	Packaging carton	Multibox carton	Weight per piece
Ecoline 40W DALI dimmable driver	L05040	50 pieces	150 pieces	215 g

### Active overload protection

If the maximum output power is exceeded, the LED driver reduces the LED output to a current level within the specification of the driver. This prevents overload at all times.

### Overtemperature protection

The LED driver is protected against thermal overload. If the temperature limit is exceeded, the output current is reduced.

### Active overcurrent protection

Active overcurrent protection to allow hotswapping of LEDs higher than 3 Watt.

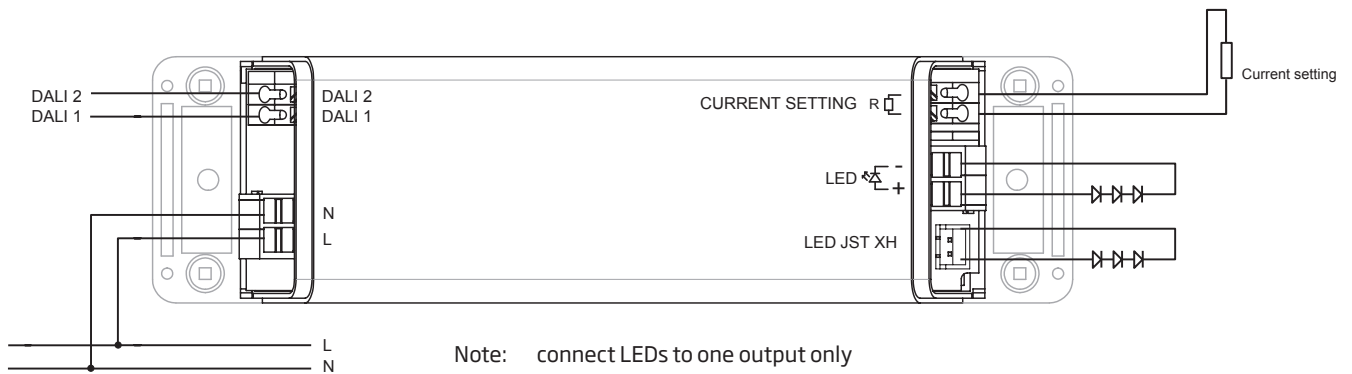
### Short-circuit protection

In case of a short circuit the LED driver switches to protection mode. After the removal of the short-circuit the LED driver will recover automatically.

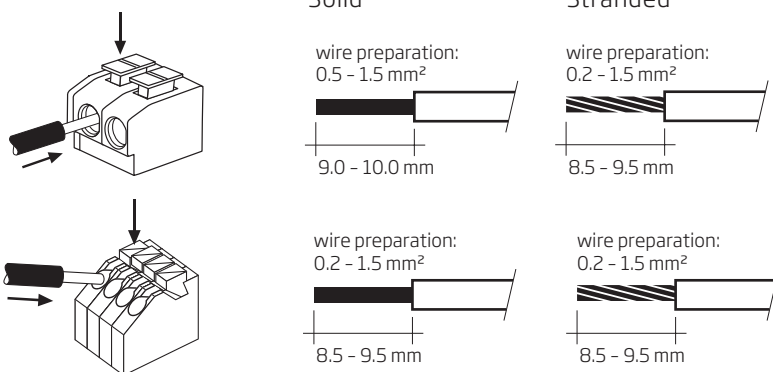
### No-load operation

In no-load operation the output voltage will not exceed the specified open circuit output voltage.

### Wiring diagram

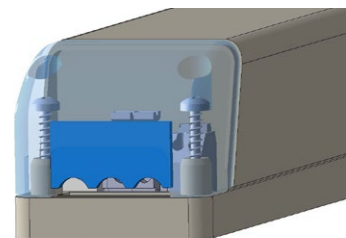


### Wiring of device

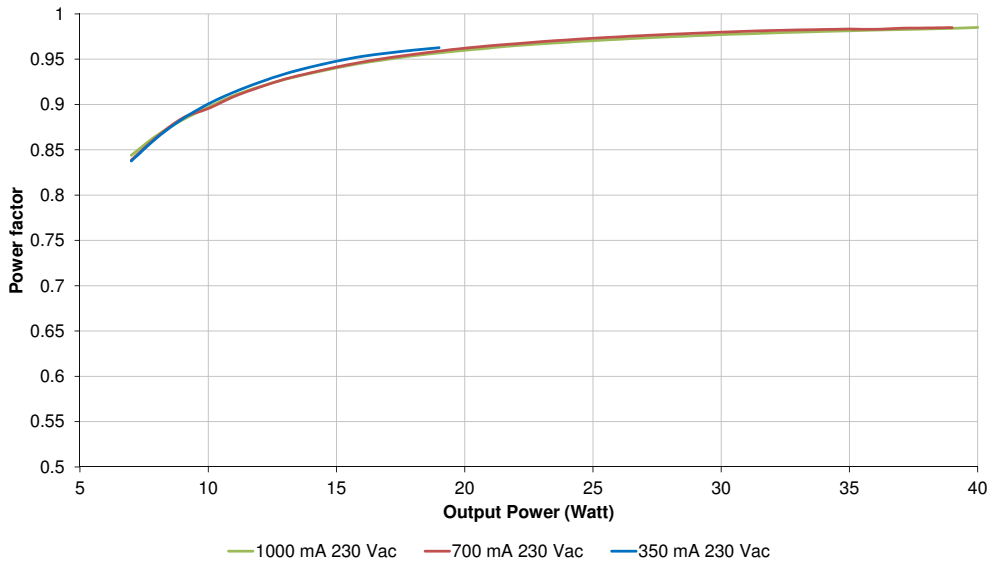


### Strain relief

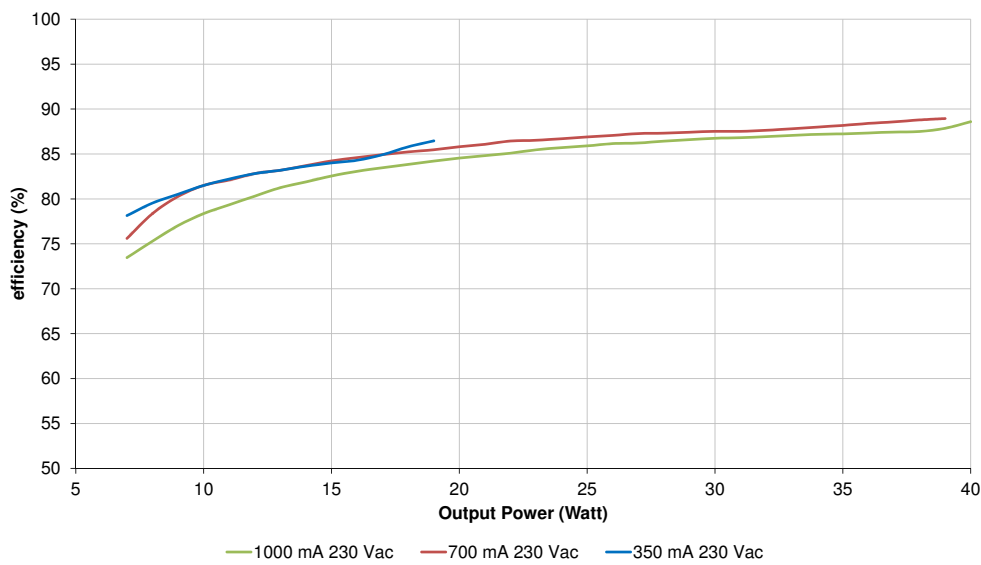
The strain relief insert can be reversed or removed to accommodate wiring of various diameters.



Power factor



Efficiency

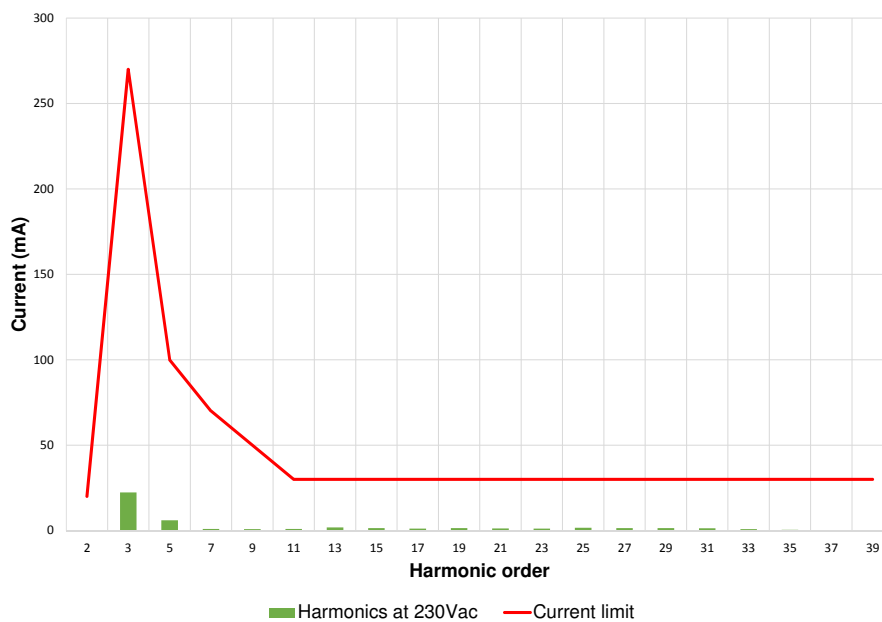


## Output current vs resistance

## L05040

Resistance (kΩ)	Output current (mA)
1000	100
510	150
412	200
332	250
270	300
220	350
160	400
124	450
100	500
75	550
56	600
43	650
33	700
27	750
22	800
18	850
15	900
12	950
10	1000

## Harmonics L05040 (limit according to IEC 61000-3-2 table 2)



Nijverheidsplein 16  
 NL-1704 RB Heerhugowaard  
 The Netherlands  
 info@lumotech.com  
 T +31 (0)72 572 30 00

[www.lumotech.com](http://www.lumotech.com)