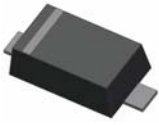


Small Signal Diode



Features

- ◇ Ultra small mold type, high reliability, low IR low V_F
- ◇ Surface device type mounting
- ◇ Moisture sensitivity level 1
- ◇ Matte Tin(Sn) lead finish with Nickel(Ni) underplate
- ◇ Pb free version and RoHS compliant
- ◇ Green compound (Halogen free) with suffix "G" on packing code and prefix "G" on date code

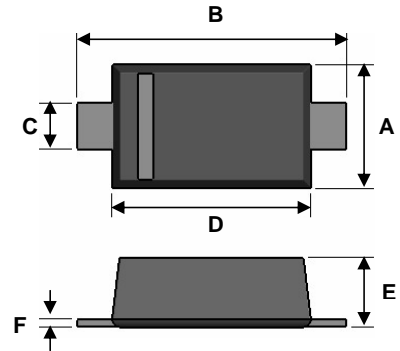
Mechanical Data

- ◇ Case : Flat lead SOD-723F small outline plastic package
- ◇ Terminal: Matte tin plated, lead free., solderable per MIL-STD-202, Method 208 guaranteed
- ◇ High temperature soldering guaranteed: 260°C/10s
- ◇ Polarity : Indicated by cathode band
- ◇ Weight: 0.847±0.5mg
- ◇ Marking Code : F

Ordering Information

Part No.	Package	Packing Code	Packing	Marking
RB520G-30	SOD-723F	RL	5K / 7" Reel	F
RB520G-30	SOD-723F	RLG	5K / 7" Reel	F

SOD-723F

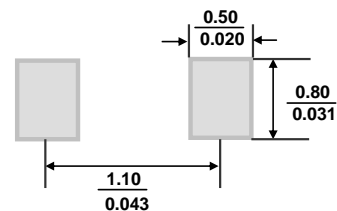


Dimensions	Unit (mm)		Unit (inch)	
	Min	Max	Min	Max
A	0.500	0.700	0.020	0.028
B	1.300	1.500	0.051	0.059
C	0.250	0.400	0.010	0.016
D	0.900	1.100	0.035	0.043
E	0.470	0.570	0.019	0.022
F	0.050	0.150	0.002	0.006

Pin Configuration



Suggested PAD Layout



Maximum Ratings and Electrical Characteristics

Rating at 25°C ambient temperature unless otherwise specified.

Maximum Ratings

Type Number	Symbol	Value	Units
Reverse Voltage	V_R	30	V
Mean Forward Current	$I_{F(AV)}$	0.1	A
Non-Repetitive Peak Forward Surge Current (8.3ms)	I_{FSM}	0.5	A
Junction Temperature	T_J	125	°C
Storage Temperature Range	T_{STG}	-40 to + 125	°C

Small Signal Diode

Rating and Characteristic Curves

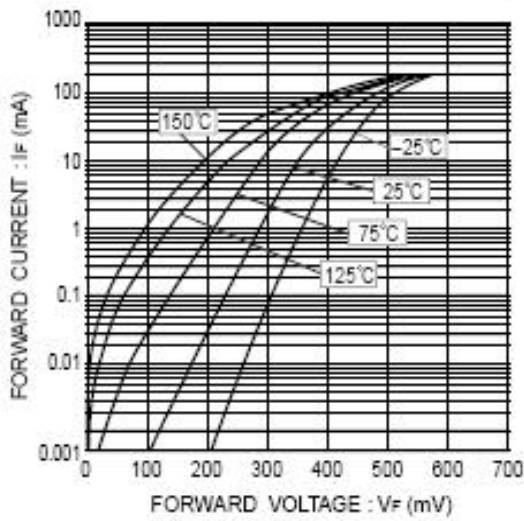


Fig.1 Forward characteristics

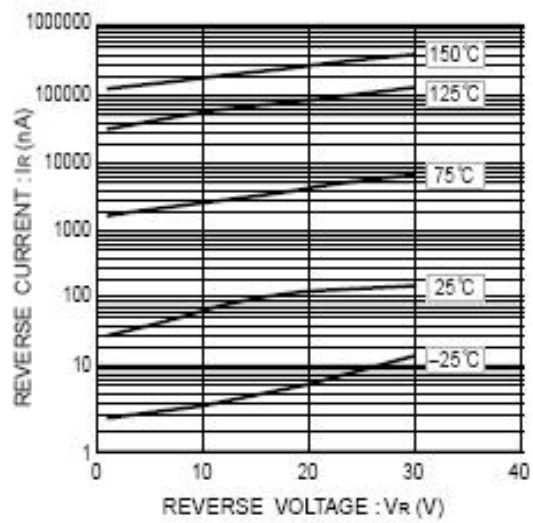


Fig.2 Reverse characteristics

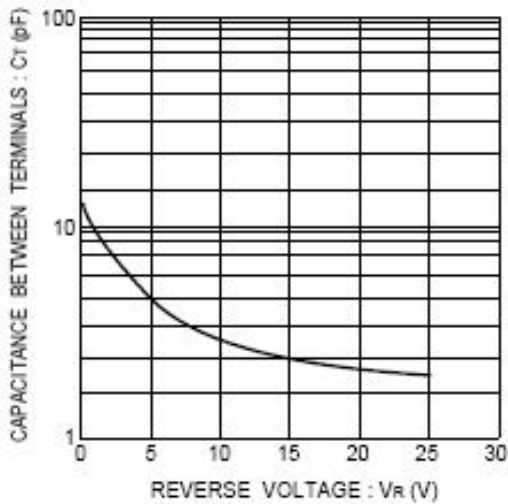


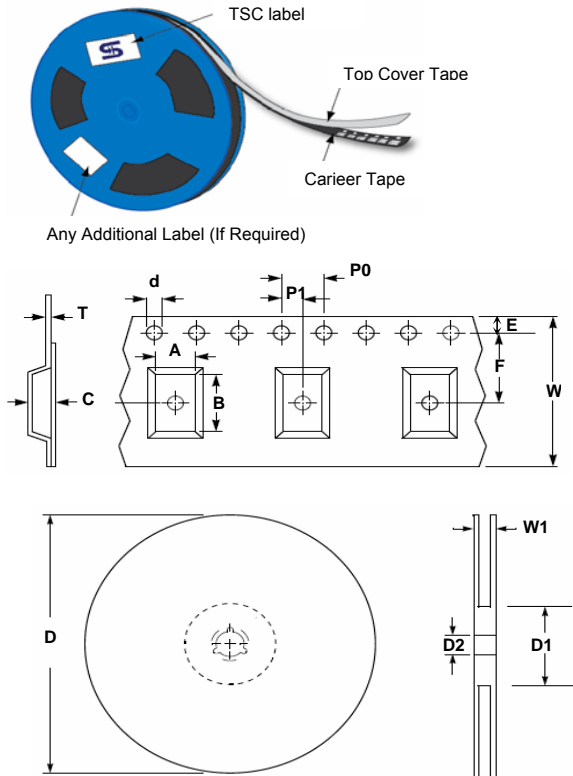
Fig. Capacitance between terminals characteristics

Small Signal Diode

Electrical Characteristics

Type Number		Symbol	Min	Max	Units
Forward Voltage	$I_F = 10\text{mA}$	V_F	-	0.45	V
Reverse Leakage Current	$V_R = 10\text{V}$	I_R	-	0.5	μA

Tape & Reel specification



Item	Symbol	Dimension(mm)
Carrier width	A	1.7 ± 0.10
Carrier length	B	3.73 ± 0.10
Carrier depth	C	1.68 ± 0.10
Sprocket hole	d	1.5 ± 0.1
Reel outside diameter	D	178 ± 1
Reel inner diameter	D1	55 Min
Feed hole width	D2	13.0 ± 0.20
Sprocket hole position	E	1.75 ± 0.10
Punch hole position	F	3.50 ± 0.05
Sprocket hole pitch	P0	4.00 ± 0.10
Embossment center	P1	2.00 ± 0.05
Overall tape thickness	T	0.23 ± 0.05
Tape width	W	8.00 ± 0.20
Reel width	W1	14.4 Max

