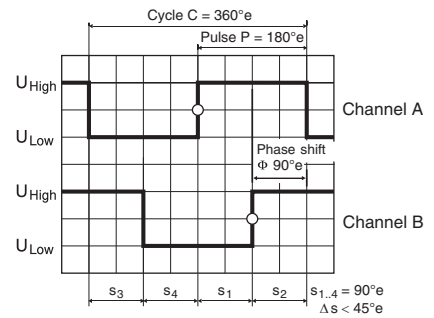
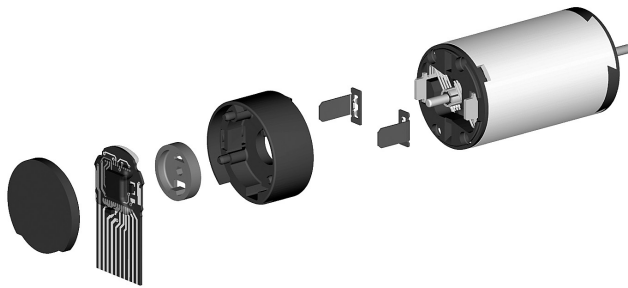


Encoder MR Type S, 64 - 256 CPT, 2 Channels, with Line Driver

maxon sensor



Direction of rotation cw (definition cw p. 48)

- Stock program
- Standard program
- Special program (on request)

Order Number						
323049	323050	334910	323051	323052	323053	323054

Type							
Counts per turn	64	64	100	128	128	256	256
Number of channels	2	2	2	2	2	2	2
Max. operating frequency (kHz)	80	80	100	160	160	320	320
Max. speed (rpm)	75000	75000	60000	75000	75000	75000	75000



maxon Modular System						
+ Motor	Page	+ Gearhead	Page	+ Brake	Page	Overall length [mm] / • see Gearhead
RE 8, 0.5 W	51					22.6
RE 8, 0.5 W	51	GP 8, 0.01 - 0.1	203			•
RE 10, 0.75 W	53					22.8
RE 10, 0.75 W	53	GP 10, 0.005 - 0.15 Nm 204/205				•
RE 10, 1.5 W	55					30.4
RE 10, 1.5 W	55	GP 10, 0.005 - 0.15 Nm 204/205				•
RE 13, 0.75 W	58					26.3
RE 13, 0.75 W	59					28.7
RE 13, 0.75 W	59	GP 13, 0.05 - 0.15 Nm 207				•
RE 13, 0.75 W	59	GP 13, 0.2 - 0.35 Nm 208				•
RE 13, 2 W	62					38.5
RE 13, 2 W	63					40.9
RE 13, 2 W	63	GP 13, 0.05 - 0.15 Nm 207				•
RE 13, 2 W	63	GP 13, 0.2 - 0.35 Nm 208				•
RE 13, 1.5 W	66					28.4
RE 13, 1.5 W	67					30.8
RE 13, 1.5 W	67	GP 13, 0.05 - 0.15 Nm 207				•
RE 13, 1.5 W	67	GP 13, 0.2 - 0.35 Nm 208				•
RE 13, 3 W	70					40.6
RE 13, 3 W	71					43.0
RE 13, 3 W	71	GP 13, 0.05 - 0.15 Nm 207				•
RE 13, 3 W	71	GP 13, 0.2 - 0.35 Nm 208				•
A-max 12, 0.5 W	88					25.3
A-max 12, 0.5 W	88	GP 10, 0.01 - 0.15 Nm 205				•
A-max 12, 0.5 W	88	GS 12, 0.01 - 0.03 Nm 206				•
A-max 12, 0.5 W	88	GP 13, 0.05 - 0.15 Nm 207				•
A-max 12, 0.5 W	88	GP 13, 0.2 - 0.35 Nm 208				•
RE-max 13, 0.75 W	116					25.2
RE-max 13, 0.75 W	116	GP 13, 0.05 - 0.15 Nm 207				•
RE-max 13, 0.75 W	116	GP 13, 0.2 - 0.35 Nm 208				•
RE-max 13, 2 W	118					36.2
RE-max 13, 2 W	118	GP 13, 0.05 - 0.15 Nm 207				•
RE-max 13, 2 W	118	GP 13, 0.2 - 0.35 Nm 208				•

Technical Data	
Supply voltage V_{CC}	5 V \pm 5%
Output signal	TTL compatible
Phase shift Φ	90° \pm 45°e
Operating temperature range	-25 ... +85°C
Moment of inertia of code wheel	≤ 0.005 gcm ²
Output current per channel	max. 5 mA

Pin Allocation

Order Number 323049 - 323054
 Pin 1 - 10 / X = 0.3 \pm 0.05 / L = 80 \pm 3
 Compatible connector: Molex 52207-1085, Tyco 1-84953-0
 Adapter print to DIN 41651, Art. No. 327086

Order Number 334910
 Pin 1 - 8 / X = 0.3 \pm 0.03 / L = 84 \pm 3
 Compatible connector: Molex 52745-0896

