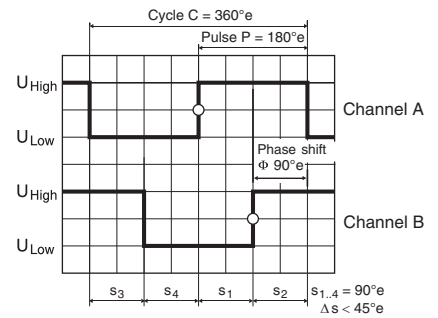
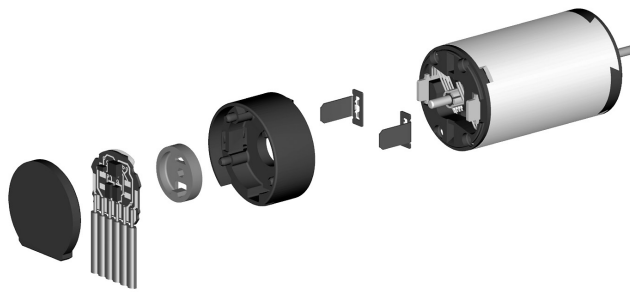


Encoder MR Type S, 64 - 256 Counts per turn, 2 Channels



Direction of rotation cw (definition cw p. 48)

- Stock program
- Standard program
- Special program (on request)

Order Number

241057	241060	241062
--------	--------	--------

Type	64	128	256
Counts per turn	64	128	256
Number of channels	2	2	2
Max. operating frequency (kHz)	80	160	320
Max. speed (rpm)	75000	75000	75000



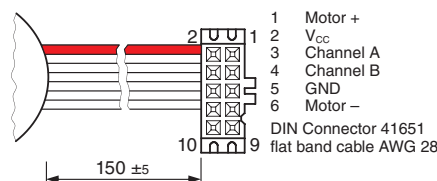
maxon Modular System

+ Motor	Page	+ Gearhead	Page	+ Brake	Page	Overall length [mm] / ● see Gearhead
RE 13, 0.75 W	58					26.3 26.3 26.3
RE 13, 0.75 W	59					28.7 28.7 28.7
RE 13, 0.75 W	59	GP 13, 0.05 - 0.15 Nm	207			● ● ●
RE 13, 0.75 W	59	GP 13, 0.2 - 0.35 Nm	208			● ● ●
RE 13, 2 W	62					38.5 38.5 38.5
RE 13, 2 W	63					40.9 40.9 40.9
RE 13, 2 W	63	GP 13, 0.05 - 0.15 Nm	207			● ● ●
RE 13, 2 W	63	GP 13, 0.2 - 0.35 Nm	208			● ● ●
RE 13, 1.5 W	66					28.4 28.4 28.4
RE 13, 1.5 W	67					30.8 30.8 30.8
RE 13, 1.5 W	67	GP 13, 0.05 - 0.15 Nm	207			● ● ●
RE 13, 1.5 W	67	GP 13, 0.2 - 0.35 Nm	208			● ● ●
RE 13, 3 W	70					40.6 40.6 40.6
RE 13, 3 W	71					43.0 43.0 43.0
RE 13, 3 W	71	GP 13, 0.05 - 0.15 Nm	207			● ● ●
RE 13, 3 W	71	GP 13, 0.2 - 0.35 Nm	208			● ● ●
RE-max 13, 0.75 W	116					25.2 25.2 25.2
RE-max 13, 0.75 W	116	GP 13, 0.05 - 0.15 Nm	207			● ● ●
RE-max 13, 0.75 W	116	GP 13, 0.2 - 0.35 Nm	208			● ● ●
RE-max 13, 2 W	118					36.2 36.2 36.2
RE-max 13, 2 W	118	GP 13, 0.05 - 0.15 Nm	207			● ● ●
RE-max 13, 2 W	118	GP 13, 0.2 - 0.35 Nm	208			● ● ●

Technical Data

Supply voltage V_{CC}	$5V \pm 5\%$
Output signal	TTL compatible
Phase shift Φ	$90^\circ \pm 45^\circ$
Operating temperature range	$-25 \dots +85^\circ C$
Moment of inertia of code wheel	$\leq 0.005 \text{ gcm}^2$
Output current per channel	max. 5 mA

Pin Allocation



Connection example

