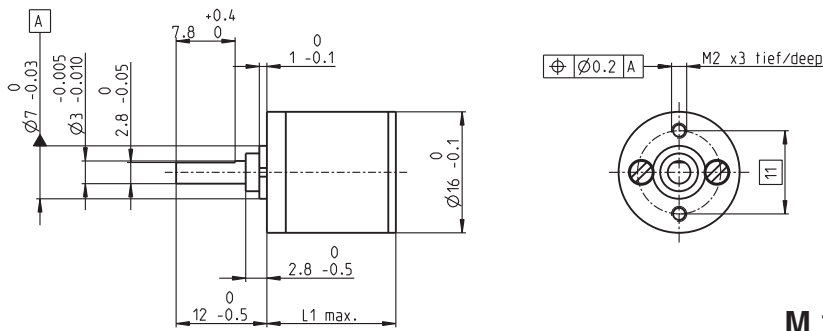


# Spur Gearhead GS 16 V $\varnothing 16$ mm, 0.06 - 0.1 Nm

Reinforced

maxon gear



M 1:1

## Technical Data

Spur Gearhead	straight teeth
Output shaft	stainless steel, hardened
Bearing at output	preloaded ball bearings
Radial play, 6.5 mm from flange	max. 0.02 mm
Axial play at axial load	< 5 N 0 mm > 5 N max. 0.05 mm
Max. radial load, 6.5 mm from flange	25 N
Max. permissible axial load	5 N
Max. permissible force for press fits	5 N
Recommended input speed	< 8000 rpm
Recommended temperature range	-15 ... +100°C
Extended range as option	-40 ... +100°C

- Stock program
- Standard program
- Special program (on request)

## Order Number

235066	235070	235073	235076	235079	235082
--------	--------	--------	--------	--------	--------

## Gearhead Data

1 Reduction	6.4 : 1	22 : 1	76 : 1	261 : 1	900 : 1	3101 : 1
2 Reduction absolute	$\frac{409}{63}$	$\frac{12493}{567}$	$\frac{387293}{5103}$	$\frac{12005773}{45927}$	$\frac{372178963}{413343}$	$\frac{11537547853}{3720087}$
3 Max. motor shaft diameter	mm 1.5	1.5	1.5	1.5	1.5	1.5
<b>Order Number</b>	<b>235068</b>	<b>235071</b>	<b>235074</b>	<b>235077</b>	<b>235080</b>	<b>235083</b>
1 Reduction	9.1 : 1	31 : 1	108 : 1	371 : 1	1278 : 1	4402 : 1
2 Reduction absolute	$\frac{899}{99}$	$\frac{27869}{891}$	$\frac{863939}{8019}$	$\frac{26782109}{72171}$	$\frac{830245379}{649539}$	$\frac{25737606749}{5845851}$
3 Max. motor shaft diameter	mm 1.5	1.5	1.5	1.5	1.5	1.5
<b>Order Number</b>	<b>235069</b>	<b>235072</b>	<b>235075</b>	<b>235078</b>	<b>235081</b>	<b>235084</b>
1 Reduction	12 : 1	41 : 1	141 : 1	485 : 1	1670 : 1	5752 : 1
2 Reduction absolute	$\frac{961}{81}$	$\frac{29791}{729}$	$\frac{923521}{6561}$	$\frac{28629151}{59049}$	$\frac{887503681}{531441}$	$\frac{27512614111}{4782969}$
3 Max. motor shaft diameter	mm 1	1	1	1	1	1
4 Number of stages	2	3	4	5	6	7
5 Max. continuous torque	Nm 0.06	0.06	0.10	0.10	0.10	0.10
6 Intermittently permissible torque at gear output	Nm 0.15	0.15	0.30	0.30	0.30	0.30
12 Sense of rotation, drive to output	=	≠	=	≠	=	≠
7 Max. efficiency	% 81	73	66	59	53	48
8 Weight	g 13.8	14.5	15.8	17.0	17.9	18.5
9 Average backlash no load	° 1.0	1.0	1.2	1.2	1.5	1.5
10 Mass inertia	gcm <sup>2</sup> 0.0057	0.0052	0.0035	0.0032	0.0032	0.0032
11 Gearhead length L1	mm 14.3	17.3	19.3	21.3	23.3	25.3



## maxon Modular System

+ Motor	Page	+ Sensor/Brake	Page	Overall length [mm] = Motor length + gearhead length + (sensor / brake) + assembly parts					
A-max 16	89-92			39.8	42.8	44.8	46.8	48.8	50.8
A-max 16	90/92	MR	258/260	44.8	47.8	49.8	51.8	53.8	55.8
A-max 16	90/92	MEnc 13	274	47.9	50.9	52.9	54.9	56.9	58.9