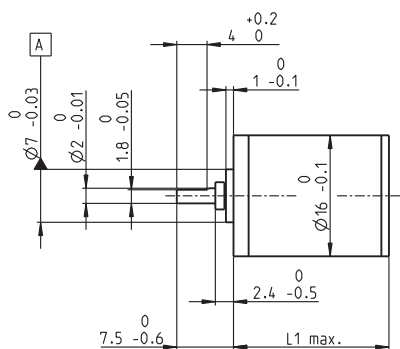


Spur Gearhead GS 16 K $\varnothing 16$ mm, 0.01 - 0.03 Nm

Plastic Version



Technical Data

Spur Gearhead	straight teeth
Output shaft	stainless steel, hardened
Bearing at output	sleeve bearing
Radial play, 6.5 mm from flange	max. 0.15 mm
Axial play	0.02 - 0.12 mm
Max. radial load, 6.5 mm from flange	1 N
Max. permissible axial load	2 N
Max. permissible force for press fits	15 N
Recommended input speed	< 8000 rpm
Recommended temperature range	-15 ... +80°C

M 1:1

- Stock program
- Standard program
- Special program (on request)

Order Number

Gearhead Data	Order Number						
	201463	201465	201467	201469	201471	201473	
1 Reduction	6.4 : 1	22 : 1	76 : 1	261 : 1	900 : 1	3101 : 1	
2 Reduction absolute	$\frac{409}{63}$	$\frac{12493}{567}$	$\frac{387293}{5103}$	$\frac{12005773}{45927}$	$\frac{372178963}{413343}$	$\frac{11537547853}{3720087}$	
3 Max. motor shaft diameter	mm 1.5	1.5	1.5	1.5	1.5	1.5	
Order Number	207405	207406	207407	207408	207409	207410	
1 Reduction	9.1 : 1	31 : 1	108 : 1	371 : 1	1278 : 1	4402 : 1	
2 Reduction absolute	$\frac{899}{99}$	$\frac{27869}{891}$	$\frac{863939}{8019}$	$\frac{26782109}{72171}$	$\frac{830245379}{649539}$	$\frac{25737606749}{5845851}$	
3 Max. motor shaft diameter	mm 1.5	1.5	1.5	1.5	1.5	1.5	
Order Number	201464	201466	201468	201470	201472	201474	
1 Reduction	12 : 1	41 : 1	141 : 1	485 : 1	1670 : 1	5752 : 1	
2 Reduction absolute	$\frac{961}{81}$	$\frac{29791}{729}$	$\frac{923521}{6561}$	$\frac{28629151}{59049}$	$\frac{887503681}{531441}$	$\frac{27512614111}{4782969}$	
3 Max. motor shaft diameter	mm 1	1	1	1	1	1	
4 Number of stages	2	3	4	5	6	7	
5 Max. continuous torque	Nm 0.010	0.020	0.030	0.030	0.030	0.030	
6 Intermittently permissible torque at gear output	Nm 0.10	0.10	0.10	0.10	0.10	0.10	
12 Sense of rotation, drive to output	=	≠	=	≠	=	≠	
7 Max. efficiency	% 81	73	66	59	53	48	
8 Weight	g 9.0	9.8	10.2	10.7	11.3	11.7	
9 Average backlash no load	° 1.0	1.0	1.2	1.2	1.5	1.5	
10 Mass inertia	gcm ² 0.0032	0.0031	0.0031	0.0031	0.0031	0.0031	
11 Gearhead length L1	mm 11.8	12.8	14.8	16.8	18.8	20.8	



maxon Modular System

+ Motor	Page	+ Sensor/Brake	Page	Overall length [mm] = Motor length + gearhead length + (sensor / brake) + assembly parts					
A-max 16	89-92			37.3	38.3	40.3	42.3	44.3	46.3
A-max 16	90/92	MR	258/260	42.3	43.3	45.3	47.3	49.3	51.3
A-max 16	90/92	MEnc 13	274	45.4	46.4	48.4	50.4	52.4	54.4