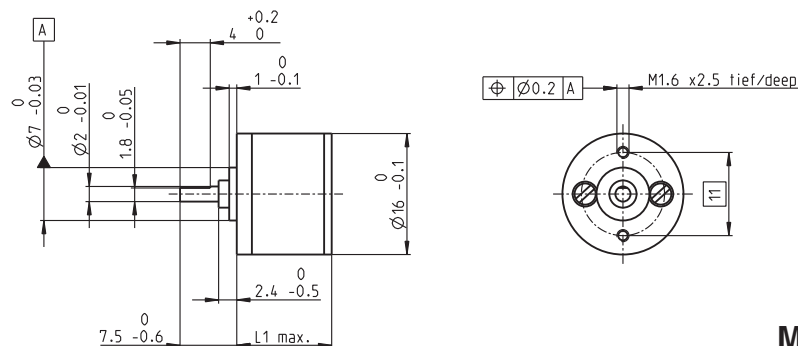


Spur Gearhead GS 16 A $\varnothing 16$ mm, 0.015 - 0.04 Nm



Technical Data

Spur Gearhead	straight teeth
Output shaft	stainless steel, hardened
Bearing at output	sleeve bearing
Radial play, 6.5 mm from flange	max. 0.15 mm
Axial play	0.02 - 0.12 mm
Max. radial load, 6.5 mm from flange	1.5 N
Max. permissible axial load	2 N
Max. permissible force for press fits	30 N
Recommended input speed	< 8000 rpm
Recommended temperature range	-15 ... +100°C
Extended range as option	-40 ... +100°C

M 1:1

- Stock program
- Standard program
- Special program (on request)

Order Number

144409	143761	143763	143765	143767	143769
--------	--------	--------	--------	--------	--------

Gearhead Data		144409	143761	143763	143765	143767	143769
1 Reduction		6.4 : 1	22 : 1	76 : 1	261 : 1	900 : 1	3101 : 1
2 Reduction absolute		403/63	12493/567	387283/5103	12005773/45927	372178963/413343	11537547853/3720087
3 Max. motor shaft diameter	mm	1.5	1.5	1.5	1.5	1.5	1.5
Order Number		207834	207835	207836	207837	207838	207839
1 Reduction		9.1 : 1	31 : 1	108 : 1	371 : 1	1278 : 1	4402 : 1
2 Reduction absolute		899/99	27869/891	863939/8019	26782109/72171	830245379/649539	25737606749/5845851
3 Max. motor shaft diameter	mm	1.5	1.5	1.5	1.5	1.5	1.5
Order Number		144410	143762	143764	143766	143768	143770
1 Reduction		12 : 1	41 : 1	141 : 1	485 : 1	1670 : 1	5752 : 1
2 Reduction absolute		961/81	29791/729	923521/6561	28629151/59049	887503681/531441	27512614111/4782969
3 Max. motor shaft diameter	mm	1	1	1	1	1	1
4 Number of stages		2	3	4	5	6	7
5 Max. continuous torque	Nm	0.015	0.025	0.035	0.040	0.040	0.040
6 Intermittently permissible torque at gear output	Nm	0.10	0.10	0.10	0.10	0.10	0.10
12 Sense of rotation, drive to output		=	≠	=	≠	=	≠
7 Max. efficiency	%	81	73	66	59	53	48
8 Weight	g	9.0	9.8	10.2	10.7	11.3	11.7
9 Average backlash no load	°	1.0	1.0	1.2	1.2	1.5	1.5
10 Mass inertia	gcm ²	0.0032	0.0031	0.0031	0.0031	0.0031	0.0031
11 Gearhead length L1	mm	11.8	12.8	14.8	16.8	18.8	20.8



maxon Modular System

+ Motor	Page	+ Sensor/Brake	Page	Overall length [mm] = Motor length + gearhead length + (sensor / brake) + assembly parts					
A-max 16	89-92			37.3	38.3	40.3	42.3	44.3	46.3
A-max 16	90/92	MR	258/260	42.3	43.3	45.3	47.3	49.3	51.3
A-max 16	90/92	MEnc 13	274	45.4	46.4	48.4	50.4	52.4	54.4