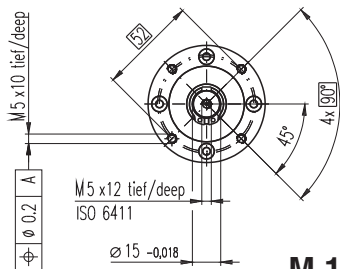
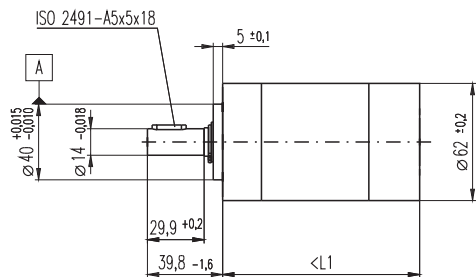


# Planetary Gearhead GP 62 A $\varnothing 62$ mm, 8 - 50 Nm



### Technical Data

Planetary Gearhead	straight teeth
Output shaft	steel
Bearing at output	ball bearing
Radial play, 7 mm from flange	max. 0.08 mm
Axial play	max. 1 mm
Max. permissible axial load	120 N
Max. permissible force for press fits	1000 N
Sense of rotation, drive to output	=
Recommended input speed	< 3000 rpm
Recommended temperature range	-30 ... +140°C
Number of stages	1 2 3
Max. radial load, 24 mm from flange	240 N 360 N 570 N

- Stock program
- Standard program
- Special program (on request)

### Order Number

110499	110501	110502	110503	110504	110505	110506	110507	110508
--------	--------	--------	--------	--------	--------	--------	--------	--------

### Gearhead Data

		5.2 : 1	19 : 1	27 : 1	35 : 1	71 : 1	100 : 1	139 : 1	181 : 1	236 : 1
1 Reduction		5.2 : 1	19 : 1	27 : 1	35 : 1	71 : 1	100 : 1	139 : 1	181 : 1	236 : 1
2 Reduction absolute		57/11	359/187	3249/121	1539/44	226223/3179	204687/2057	185193/1331	87723/484	41553/176
3 Max. motor shaft diameter	mm	8	8	8	8	8	8	8	8	8
4 Number of stages		1	2	2	2	3	3	3	3	3
5 Max. continuous torque	Nm	8	25	25	25	50	50	50	50	50
6 Intermittently permissible torque at gear output	Nm	12	37	37	37	75	75	75	75	75
7 Max. efficiency	%	80	75	75	75	70	70	70	70	70
8 Weight	g	950	1250	1250	1250	1540	1540	1540	1540	1540
9 Average backlash no load	°	1.0	1.5	1.5	1.5	2.0	2.0	2.0	2.0	2.0
10 Mass inertia	gcm <sup>2</sup>	109	100	105	89	104	105	102	88	89
11 Gearhead length L1	mm	72.5	88.3	88.3	88.3	104.2	104.2	104.2	104.2	104.2



### maxon Modular System

+ Motor	Page	+ Sensor	Page	Brake	Page	Overall length [mm] = Motor length + gearhead length + (sensor / brake) + assembly parts								
RE 50, 200 W	83					180.6	196.4	196.4	196.4	212.3	212.3	212.3	212.3	212.3
RE 50, 200 W	83	HEDS 5540	267			201.3	217.1	217.1	217.1	233.0	233.0	233.0	233.0	233.0
RE 50, 200 W	83	HEDL 5540	269			201.3	217.1	217.1	217.1	233.0	233.0	233.0	233.0	233.0
RE 50, 200 W	83	HEDL 9140	272			243.0	258.8	258.8	258.8	274.7	274.7	274.7	274.7	278.7
RE 50, 200 W	83			AB 44	322	243.0	258.8	258.8	258.8	274.7	274.7	274.7	274.7	278.7
RE 50, 200 W	83	HEDL 9140	272	AB 44	322	256.0	271.8	271.8	271.8	287.7	287.7	287.7	287.7	287.7
EC 45, 250 W	157					216.6	232.4	232.4	232.4	248.3	248.3	248.3	248.3	248.3
EC 45, 250 W	157	HEDL 9140	271			232.2	248.0	248.0	248.0	263.9	263.9	263.9	263.9	263.9
EC 45, 250 W	157	Res 26	277			216.6	232.4	232.4	232.4	248.3	248.3	248.3	248.3	248.3
EC 45, 250 W	157			AB 28	319	224.0	239.8	239.8	239.8	255.7	255.7	255.7	255.7	255.7
EC 45, 250 W	157	HEDL 9140	271	AB 28	319	241.0	256.8	256.8	256.8	272.7	272.7	272.7	272.7	272.7