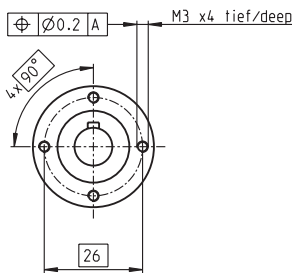
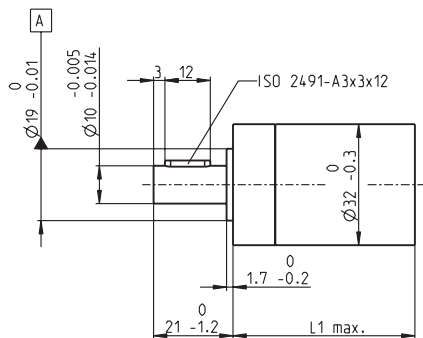


# Planetary Gearhead GP 32 HP $\varnothing 32$ mm, 4.0 - 8.0 Nm

High Power

maxon gear



M 1:2

## Technical Data

Planetary Gearhead	straight teeth
Output shaft	stainless steel
Bearing at output	ball bearing
Radial play, 10 mm from flange	max. 0.14 mm
Axial play	max. 0.4 mm
Max. radial load, 10 mm from flange	200 N
Max. permissible axial load	120 N
Max. permissible force for press fits	120 N
Sense of rotation, drive to output	=
Recommended input speed	< 8000 rpm
Recommended temperature range	-40 ... +100°C

- Stock program
- Standard program
- Special program (on request)

## Order Number

	320247	326663	326664	326668	326672	324947	324952
<b>Gearhead Data</b>							
1 Reduction	14 : 1	33 : 1	51 : 1	111 : 1	190 : 1	456 : 1	706 : 1
2 Reduction absolute	$\frac{676}{49}$	$\frac{529}{16}$	$\frac{17576}{343}$	$\frac{13824}{125}$	$\frac{456976}{2401}$	$\frac{89401}{196}$	$\frac{158171}{224}$
3 Max. motor shaft diameter mm	6	3	6	4	6	3	3
<b>Order Number</b>	<b>326659</b>		<b>326665</b>	<b>326669</b>	<b>324942</b>	<b>324948</b>	<b>324953</b>
1 Reduction	18 : 1		66 : 1	123 : 1	246 : 1	492 : 1	762 : 1
2 Reduction absolute	$\frac{624}{35}$		$\frac{16224}{245}$	$\frac{6877}{56}$	$\frac{421824}{1715}$	$\frac{86112}{175}$	$\frac{19044}{25}$
3 Max. motor shaft diameter mm	6		6	3	6	6	4
<b>Order Number</b>	<b>326660</b>		<b>326666</b>	<b>326670</b>	<b>324944</b>	<b>324949</b>	<b>324954</b>
1 Reduction	21 : 1		79 : 1	132 : 1	295 : 1	531 : 1	913 : 1
2 Reduction absolute	$\frac{299}{14}$		$\frac{3887}{49}$	$\frac{3312}{25}$	$\frac{101062}{343}$	$\frac{331776}{625}$	$\frac{36501}{40}$
3 Max. motor shaft diameter mm	6		6	4	6	4	3
<b>Order Number</b>	<b>326661</b>		<b>326667</b>	<b>326671</b>	<b>324945</b>	<b>324950</b>	
1 Reduction	23 : 1		86 : 1	159 : 1	318 : 1	589 : 1	
2 Reduction absolute	$\frac{576}{25}$		$\frac{14976}{175}$	$\frac{1587}{10}$	$\frac{389376}{1225}$	$\frac{20631}{35}$	
3 Max. motor shaft diameter mm	4		6	3	6	6	
<b>Order Number</b>	<b>326662</b>		<b>320297</b>		<b>324946</b>	<b>324951</b>	
1 Reduction	28 : 1		103 : 1		411 : 1	636 : 1	
2 Reduction absolute	$\frac{138}{5}$		$\frac{3588}{35}$		$\frac{359424}{675}$	$\frac{79488}{125}$	
3 Max. motor shaft diameter mm	4		6		6	4	
4 Number of stages	2	2	3	3	4	4	4
5 Max. continuous torque Nm	4	4	8	8	8	8	8
6 Intermittently permissible torque at gear output Nm	6	6	12	12	12	12	12
7 Max. efficiency %	75	75	70	70	60	60	60
8 Weight g	178	178	213	213	249	249	249
9 Average backlash no load °	0.8	0.8	1.0	1.0	1.0	1.0	1.0
10 Mass inertia gcm <sup>2</sup>	0.8	0.8	0.7	0.7	0.7	0.7	0.7
11 Gearhead length L1 mm	48.1	48.1	54.8	54.8	61.5	61.5	61.5



## maxon Modular System

+ Motor	Page	+ Sensor/Brake	Page	Overall length [mm] = Motor length + gearhead length + (sensor / brake) + assembly parts					
RE 35, 90 W	81			119.2	119.2	125.9	125.9	132.6	132.6
RE 35, 90 W	81	MR	263	130.6	130.6	137.3	137.3	144.0	144.0
RE 35, 90 W	81	HED_ 5540	266/268	139.9	139.9	146.6	146.6	153.3	153.3
RE 35, 90 W	81	DCT 22	276	137.3	137.3	144.0	144.0	150.7	150.7
RE 35, 90 W	81	AB 28	318	155.3	155.3	162.0	162.0	168.7	168.7
RE 35, 90 W	81	HEDS 5540 / AB 28	266/318	172.4	172.4	179.1	179.1	185.8	185.8
EC-max 30, 40 W	166			90.2	90.2	96.9	96.9	103.6	103.6
EC-max 30, 40 W	166	MR	262	102.4	102.4	109.1	109.1	115.8	115.8
EC-max 30, 40 W	166	HEDL 5540	269	110.8	110.8	117.5	117.5	124.2	124.2
EC-max 30, 40 W	166	AB 20	316	125.8	125.8	132.5	132.5	139.2	139.2
EC-max 30, 40 W	166	HEDL 5540/AB 20	269/316	146.4	146.4	153.1	153.1	159.8	159.8
EC-max 30, 60 W	167			112.2	112.2	118.9	118.9	125.6	125.6
EC-max 30, 60 W	167	MR	262	124.4	124.4	131.1	131.1	137.8	137.8
EC-max 30, 60 W	167	HEDL 5540	269	132.8	132.8	139.5	139.5	146.2	146.2
EC-max 30, 60 W	167	AB 20	316	147.8	147.8	154.5	154.5	161.2	161.2
EC-max 30, 60 W	167	HEDL 5540/AB 20	316	168.4	168.4	175.1	175.1	181.8	181.8
EC-4pole 30, 100 W	175			95.2	95.2	101.9	101.9	108.6	108.6
EC-4pole 30, 100 W	175	MR	262	107.4	107.4	114.1	114.1	120.8	120.8
EC-4pole 30, 100 W	175	HEDL 5540	270	115.8	115.8	122.5	122.5	129.2	129.2
EC-4pole 30, 100 W	175	AB 20	316	131.4	131.4	138.1	138.1	144.8	144.8
EC-4pole 30, 100 W	175	HEDL 5540/AB 20	270/316	152.2	152.2	158.9	158.9	165.6	165.6
EC-4pole 30, 200 W	176			112.2	112.2	118.9	118.9	125.6	125.6
EC-4pole 30, 200 W	176	MR	262	124.4	124.4	131.1	131.1	137.8	137.8
EC-4pole 30, 200 W	176	HEDL 5540	270	132.8	132.8	139.5	139.5	146.2	146.2
EC-4pole 30, 200 W	176	AB 20	316	148.4	148.4	155.1	155.1	161.8	161.8
EC-4pole 30, 200 W	176	HEDL 5540/AB 20	270/316	169.2	169.2	175.9	175.9	182.6	182.6
MCD EPOS, 60 W	313			168.2	168.2	174.9	174.9	181.6	181.6
MCD EPOS P, 60 W	313			168.2	168.2	174.9	174.9	181.6	181.6