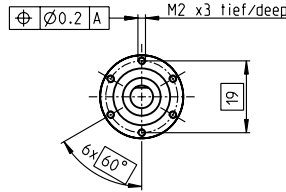
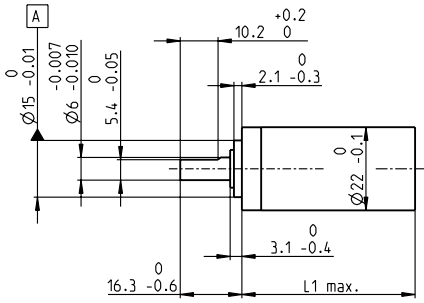


# Planetary Gearhead GP 22 HP Ø22 mm, 2.0 - 3.4 Nm

High Power

## Technical Data

Planetary Gearhead	straight teeth
Output shaft	stainless steel, hardened
Bearing at output	ball bearing
Radial play, 10 mm from flange	max. 0.2 mm
Axial play	max. 0.2 mm
Max. radial load, 10 mm from flange	70 N
Max. permissible axial load	100 N
Max. permissible force for press fits	100 N
Sense of rotation, drive to output	=
Recommended input speed	< 17'000 rpm
Recommended temperature range	-40 ... +100°C

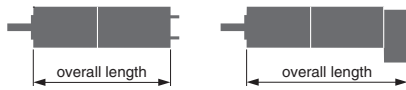


M 1:2

- Stock program
- Standard program
- Special program (on request)

## Order Number

	370683	370687	370690	370776	370780	370783	370792	370797	370802	370807
<b>Gearhead Data (provisorisch)</b>										
1 Reduction	3.8 : 1	14 : 1	20 : 1	53 : 1	76 : 1	104 : 1	198 : 1	316 : 1	410 : 1	590 : 1
2 Reduction absolute	15/4	225/16	81/4	3375/64	1215/16	87723/845	50625/256	2777895/8788	6561/16	59049/100
3 Max. motor shaft diameter mm	4	4	4	4	4	3.2	4	3.2	4	4
<b>Order Number</b>	<b>370685</b>	<b>370688</b>	<b>370691</b>	<b>370778</b>	<b>370781</b>	<b>370784</b>	<b>370794</b>	<b>370799</b>	<b>370803</b>	<b>370808</b>
1 Reduction	4.4 : 1	16 : 1	24 : 1	62 : 1	84 : 1	109 : 1	231 : 1	333 : 1	455 : 1	690 : 1
2 Reduction absolute	57/13	855/52	1539/65	12825/208	185193/2197	2187/20	192375/632	69255/208	5000211/10985	1121931/1625
3 Max. motor shaft diameter mm	3.2	3.2	3.2	3.2	3.2	4	3.2	3.2	3.2	3.2
<b>Order Number</b>	<b>370686</b>	<b>370689</b>	<b>370692</b>	<b>370779</b>	<b>370782</b>	<b>370785</b>	<b>370795</b>	<b>370800</b>	<b>370805</b>	<b>370809</b>
1 Reduction	5.4 : 1	19 : 1	29 : 1	72 : 1	89 : 1	128 : 1	270 : 1	370 : 1	479 : 1	850 : 1
2 Reduction absolute	27/5	3249/169	729/25	48735/676	4617/52	41553/325	731025/2704	10556001/28561	124659/260	531441/625
3 Max. motor shaft diameter mm	2.5	3.2	2.5	3.2	3.2	3.2	3.2	3.2	3.2	2.5
<b>Order Number</b>						<b>370786</b>	<b>370796</b>	<b>370801</b>	<b>370806</b>	
1 Reduction						157 : 1	285 : 1	389 : 1	561 : 1	
2 Reduction absolute						19683/125	18225/64	263169/676	2368521/4225	
3 Max. motor shaft diameter mm						2.5	4	3.2	3.2	
4 Number of stages	1	2	2	3	3	3	4	4	4	4
5 Max. continuous torque Nm	2	2.4	2.4	3	3	3	3.4	3.4	3.4	3.4
6 Intermittently permissible torque at gear output Nm	2.5	3	3	3.5	3.5	3.5	3.8	3.8	3.8	3.8
7 Max. efficiency %	84	70	70	59	59	59	49	49	49	49
8 Weight g	51	64	64	78	78	78	91	91	91	91
9 Average backlash no load °	1.0	1.2	1.2	1.6	1.6	1.6	2.0	2.0	2.0	2.0
10 Mass inertia gcm <sup>2</sup>	0.6	0.4	0.4	0.4	0.4	0.4	0.4	0.4	0.4	0.4
11 Gearhead length L1 mm	25.4	32.2	32.2	39.0	39.0	39.0	45.8	45.8	45.8	45.8



## maxon Modular System

+ Motor	Page	+ Sensor/Brake	Page	Overall length [mm] = Motor length + gearhead length + (sensor / brake) + assembly parts								
EC 22, 40 W	149			70.0	76.8	76.8	83.6	83.6	90.4	90.4	90.4	90.4
EC 22, 40 W	149	MR	261	76.0	82.8	82.8	89.6	89.6	96.4	96.4	96.4	96.4
EC 22, 100 W	151			88.2	95.0	95.0	101.8	101.8	101.8	108.6	108.6	108.6
EC 22, 100 W	151	MR	261	94.2	101.0	101.0	107.8	107.8	107.8	114.6	114.6	114.6
EC-max 22, 12 W	164			57.5	64.3	64.3	71.1	71.1	71.1	77.9	77.9	77.9
EC-max 22, 12 W	164	MR	261	67.2	74.0	74.0	80.8	80.8	80.8	87.6	87.6	87.6
EC-max 22, 12 W	164	AB 20	316	93.1	99.9	99.9	106.7	106.7	106.7	113.5	113.5	113.5
EC-max 22, 25 W	165			74.0	80.8	80.8	87.6	87.6	87.6	94.4	94.4	94.4
EC-max 22, 25 W	165	MR	261	83.7	90.5	90.5	97.3	97.3	97.3	104.1	104.1	104.1
EC-max 22, 25 W	165	AB 20	316	109.7	116.5	116.5	123.3	123.3	123.3	130.1	130.1	130.1
EC-4pole 22	173			74.1	80.9	80.9	87.7	87.7	87.7	94.5	94.5	94.5
EC-4pole 22	173	HEDL 5540	270	95.6	102.4	102.4	109.2	109.2	109.2	116.0	116.0	116.0
EC-4pole 22	174			91.5	98.3	98.3	105.1	105.1	105.1	111.9	111.9	111.9
EC-4pole 22	174	HEDL 5540	270	113.0	119.8	119.8	126.6	126.6	126.6	133.4	133.4	133.4

maxon gear