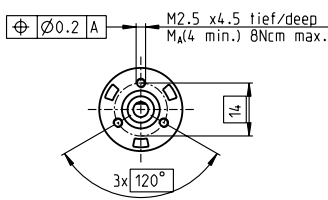
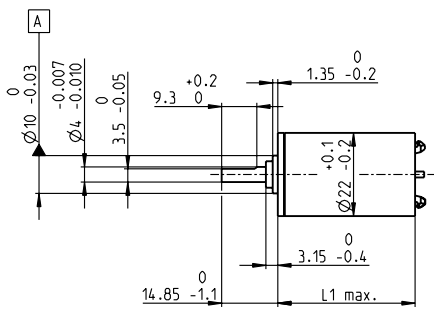


Planetary Gearhead GP 22 L $\varnothing 22$ mm, 0.2 - 0.6 Nm

Plastic Version

maxon gear



M 1:2

Technical Data

Planetary Gearhead	straight teeth
Housing	plastic
Output shaft	stainless steel, hardened
Bearing at output	sleeve bearing
Radial play, 10 mm from flange	max. 0.2 mm
Axial play	max. 0.2 mm
Max. permissible axial load	20 N
Max. permissible force for press fits	100 N
Sense of rotation, drive to output	=
Recommended input speed	< 6000 rpm
Recommended temperature range	-15 ... +80°C
Number of stages	1 2 3 4 5
Max. radial load, 10 mm from flange	15 N 20 N 25 N 30 N 30 N

- Stock program
- Standard program
- Special program (on request)

	Order Number										
	232763	232766	232772	232778	232782	32788	232794	232796	232803	232809	232815

Gearhead Data		232763	232766	232772	232778	232782	32788	232794	232796	232803	232809	232815
1 Reduction		3.8 : 1	14 : 1	53 : 1	104 : 1	198 : 1	370 : 1	590 : 1	742 : 1	1386 : 1	1996 : 1	3189 : 1
2 Reduction absolute		¹⁵ / ₄	²²⁵ / ₁₆	³³⁷⁵ / ₆₄	⁸⁷⁷²³ / ₈₄₅	⁵⁰⁶²⁵ / ₂₅₆	¹⁰⁵⁵⁶⁰⁰¹ / ₂₈₅₆₁	⁵⁹⁰⁴⁹ / ₁₀₀	⁷⁵⁹³⁷⁵ / ₁₀₂₄	¹⁵⁸³⁴⁰⁰¹⁵ / ₁₁₄₂₄₄	²⁸⁵⁰¹²⁰²⁷ / ₁₄₂₈₀₅	¹⁵⁹⁴³²³ / ₅₀₀
3 Max. motor shaft diameter	mm	4	4	4	3.2	4	3.2	4	4	3.2	3.2	4
Order Number		232764	232767	232773	232779	232783	232789	232795	232798	232804	232810	232816
1 Reduction		4.4 : 1	16 : 1	62 : 1	109 : 1	231 : 1	389 : 1	690 : 1	867 : 1	1460 : 1	2102 : 1	3728 : 1
2 Reduction absolute		⁵⁷ / ₁₃	⁸⁵⁵ / ₅₂	¹²⁸²⁵ / ₂₀₈	²¹⁸⁷ / ₂₀	¹⁹²³⁷⁵ / ₈₃₂	²⁶³¹⁶⁹ / ₆₇₆	¹¹²¹⁹³¹ / ₁₆₂₅	²⁸⁸⁵⁶²⁵ / ₃₃₂₈	³⁹⁴⁷⁵³⁵ / ₂₇₀₄	⁷¹⁰⁵⁵⁶³ / ₃₃₈₀	³⁰²⁹²¹³⁷ / ₈₁₂₅
3 Max. motor shaft diameter	mm	3.2	3.2	3.2	4	3.2	3.2	3.2	3.2	3.2	3.2	3.2
Order Number		232765	232768	232774	232780	232784	232790	232797	232799	232805	232811	232817
1 Reduction		5.4 : 1	19 : 1	72 : 1	128 : 1	270 : 1	410 : 1	850 : 1	1014 : 1	1538 : 1	2214 : 1	4592 : 1
2 Reduction absolute		²⁷ / ₅	³²⁴⁹ / ₁₆₉	⁴⁸⁷³⁵ / ₆₇₆	⁴¹⁵⁵³ / ₃₂₅	⁷³¹⁰²⁵ / ₂₇₀₄	⁶⁵⁶¹ / ₁₆	⁵³¹⁴⁴¹ / ₆₂₅	¹⁰⁹⁶⁵³⁷⁵ / ₁₀₈₁₆	⁹⁸⁴¹⁵ / ₆₄	¹⁷⁷¹⁴⁷ / ₈₀	¹⁴³⁴⁸⁹⁰⁷ / ₃₁₂₅
3 Max. motor shaft diameter	mm	2.5	3.2	3.2	3.2	3.2	4	2.5	3.2	4	4	2.5
Order Number			232769	232775	232781	232785	232791		232800	232806	232812	
1 Reduction			20 : 1	76 : 1	157 : 1	285 : 1	455 : 1		1068 : 1	1621 : 1	2458 : 1	
2 Reduction absolute			⁸¹ / ₄	¹²¹⁵ / ₁₆	¹⁹⁶⁸³ / ₁₂₅	¹⁸²²⁵ / ₆₄	⁵⁰⁰⁰²¹¹ / ₁₀₉₈₅		²⁷³³⁷⁵ / ₂₅₆	⁶⁰¹⁶³²⁰⁵⁷ / ₃₇₁₂₉₃	¹³⁵⁰⁰⁵⁶⁹⁹⁷ / ₅₄₈₂₅	
3 Max. motor shaft diameter	mm		4	4	2.5	4	3.2		4	3.2	3.2	
Order Number			232770	232776		232786	232792		232801	232807	232813	
1 Reduction			24 : 1	84 : 1		316 : 1	479 : 1		1185 : 1	1707 : 1	2589 : 1	
2 Reduction absolute			¹⁵³⁹ / ₆₅	¹⁸⁵¹⁹³ / ₂₁₉₇		²⁷⁷⁷⁸⁹⁵ / ₈₇₈₈	¹²⁴⁶⁵⁹ / ₂₆₀		⁴¹⁶⁶⁸⁴²⁵ / ₃₅₁₅₂	¹⁵⁰⁰⁰⁶³³ / ₆₇₈₈	³³⁶⁵⁷⁹³ / ₁₃₀₀	
3 Max. motor shaft diameter	mm		3.2	3.2		3.2	3.2		3.2	3.2	3.2	
Order Number			232771	232777		232787	232793		232802	232808	232814	
1 Reduction			29 : 1	89 : 1		333 : 1	561 : 1		1249 : 1	1798 : 1	3027 : 1	
2 Reduction absolute			⁷²⁹ / ₂₅	⁴⁶¹⁷ / ₅₂		⁶⁹²⁵⁵ / ₂₀₈	²³⁶⁸⁵²¹ / ₄₂₂₅		¹⁰³⁸⁸²⁵ / ₈₃₂	³⁷³⁹⁷⁷ / ₂₀₈	⁶³⁹⁵⁰⁰⁶⁷ / ₂₁₁₂₅	
3 Max. motor shaft diameter	mm		2.5	3.2		3.2	3.2		3.2	3.2	3.2	5
4 Number of stages		1	2	3	3	4	4	4	5	5	5	0.6
5 Max. continuous torque	Nm	0.2	0.3	0.4	0.4	0.5	0.5	0.5	0.6	0.6	0.6	0.6
6 Intermittently permissible torque at gear output	Nm	0.3	0.4	0.5	0.5	0.7	0.7	0.7	0.8	0.8	0.8	0.8
7 Max. efficiency	%	84	70	59	59	49	49	49	42	42	42	42
8 Weight	g	28	35	43	43	51	51	51	59	59	59	59
9 Average backlash no load	°	1.0	1.2	1.6	1.6	2.0	2.0	2.0	2.0	2.0	2.0	2.0
10 Mass inertia	gcm ²	0.5	0.4	0.4	0.4	0.4	0.4	0.4	0.4	0.4	0.4	0.4
11 Gearhead length L1	mm	22.7	29.5	36.3	36.3	43.1	43.1	43.1	49.9	49.9	49.9	49.9



maxon Modular System

+ Motor	Page	+ Sensor/Brake	Page	Overall length [mm] = Motor length + gearhead length + (sensor / brake) + assembly parts									
A-max 22	97-100			54.7	61.5	68.3	68.3	75.1	75.1	81.9	81.9	81.9	81.9
A-max 22	98/100	MR	258/260	59.7	66.5	73.3	73.3	80.1	80.1	80.1	86.9	86.9	86.9
A-max 22	98/100	Enc 22	265	69.1	75.9	82.7	82.7	89.5	89.5	89.5	96.3	96.3	96.3
A-max 22	98/100	MEnc 13	274	61.8	68.6	75.4	75.4	82.2	82.2	82.2	89.0	89.0	89.0