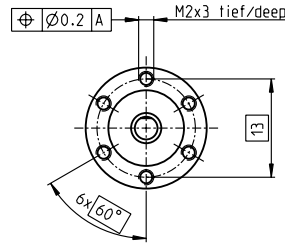
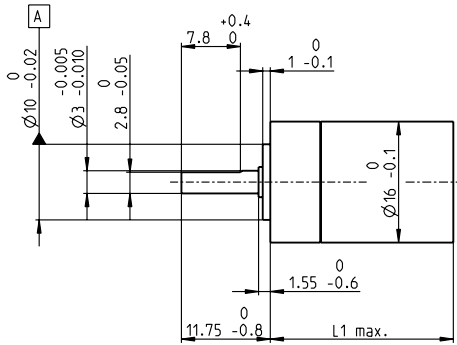


Planetary Gearhead GP 16 M $\varnothing 16$ mm, 0.1 - 0.3 Nm

Sterilizable



M 1:1

Technical Data

Planetary Gearhead	straight teeth
Output shaft	stainless steel, hardened
Bearing at output	preloaded ball bearings
Radial play, 6 mm from flange	max. 0.08 mm
Axial play at axial load	< 4 N 0 mm > 4 N max. 0.05 mm
Max. permissible axial load	50 N
Max. permissible force for press fits	100 N
Sense of rotation, drive to output	=
Recommended input speed	< 8000 rpm
Recommended temperature range	-15 ... +100°C
Extended range as option	-40 ... +100°C
Number of stages	1 2 3 4 5
Max. radial load, 6 mm from flange	10 N 15 N 20 N 20 N 20 N

- Stock program
- Standard program
- Special program (on request)

Order Number

Order Number	312908	312910	312913	312916	312917	312920	312922	312925
Gearhead Data								
1 Reduction	4.4:1	19:1	84:1	157:1	370:1	690:1	1621:1	3027:1
2 Reduction absolute	57/13	3249/169	185193/2197	19683/125	10556001/28561	1121931/1625	601692057/371293	63950067/21125
3 Max. motor shaft diameter mm	2	2	2	1.5	2	2	2	2
Order Number	312909	312911	312914		312918	312921	312923	312926
1 Reduction	5.4:1	24:1	104:1		455:1	850:1	1996:1	3728:1
2 Reduction absolute	27/5	1539/65	87723/845		5000211/10985	531441/625	285012027/142805	30292137/8125
3 Max. motor shaft diameter mm	1.5	2	2		2		2	2
Order Number		312912	312915		312919		312924	312927
1 Reduction		29:1	128:1		561:1		2458:1	4592:1
2 Reduction absolute		729/25	41553/325		2368521/4225		135005697/54925	14348907/3125
3 Max. motor shaft diameter mm		1.5	2		2		2	1.5
4 Number of stages	1	2	3	3	4	4	5	5
5 Max. continuous torque Nm	0.10	0.15	0.20	0.20	0.25	0.25	0.30	0.30
6 Intermittently permissible torque at gear output Nm	0.150	0.225	0.300	0.300	0.375	0.375	0.450	0.450
7 Max. efficiency %	90	81	73	73	65	65	59	59
8 Weight g	25	28	32	32	36	36	41	41
9 Average backlash no load °	1.4	1.6	2.0	2.0	2.4	2.4	3.0	3.0
10 Mass inertia gcm ²	0.07	0.05	0.05	0.04	0.05	0.05	0.05	0.05
11 Gearhead length L1 mm	20.6	24.2	27.8	27.8	31.4	31.4	35.0	35.0



maxon Modular System

+ Motor	Page	+ Sensor/Brake	Page	Overall length [mm] = Motor length + gearhead length + (sensor / brake) + assembly parts							
EC 16, 30 W, ster.	146			60.4	64.0	67.7	67.7	71.3	71.3	73.9	73.9
EC 16, 60 W, ster.	148			76.4	80.0	83.7	83.7	87.3	87.3	90.9	90.9

Application	Sterilization information
Medicine / surgery / chemicals	The motor can be sterilized at least 100 times in autoclave. No need to dismantle.
Hand tools that can be sterilized, such as bone saw, bone drilling and grinding machine Dermatological and dental tools Infusion pumps ECG Therapy aid, analysis and dialysis equipment	Sterilization with steam Temperature +134°C ± 4°C Compression pressure up to 2.3 bar Rel. humidity 100 % Cycle length 20 minutes