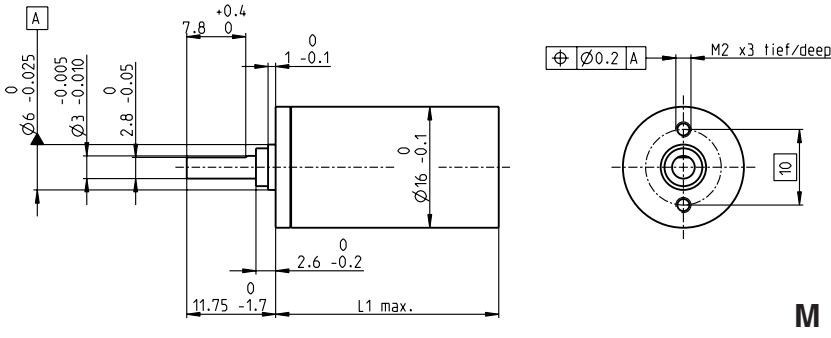


# Planetary Gearhead GP 16 A $\varnothing 16$ mm, 0.1 - 0.3 Nm



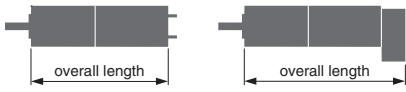
Technical Data	
Planetary Gearhead	straight teeth
Output shaft	stainless steel, hardened
Bearing at output	sleeve bearing
Radial play, 6 mm from flange	max. 0.06 mm
Axial play	0.02 - 0.10 mm
Max. permissible axial load	8 N
Max. permissible force for press fits	100 N
Sense of rotation, drive to output	=
Recommended input speed	< 8000 rpm
Recommended temperature range	-15 ... +100°C
Extended range as option	-40 ... +100°C
Number of stages	1 2 3 4 5
Max. radial load, 6 mm from flange	8 N 12 N 16 N 20 N 20 N

M 1:1

- Stock program
- Standard program
- Special program (on request)

## Order Number

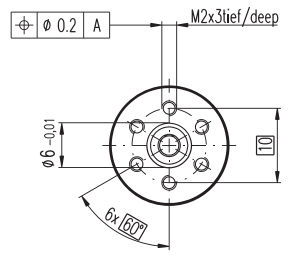
	110321	110322	110323	118186	110324	134782	110325	134785
<b>Gearhead Data</b>								
1 Reduction	4.4 : 1	19 : 1	84 : 1	157 : 1	370 : 1	690 : 1	1621 : 1	3027 : 1
2 Reduction absolute	$\frac{57}{13}$	$\frac{3249}{169}$	$\frac{185193}{2197}$	$\frac{19683}{125}$	$\frac{10556001}{28561}$	$\frac{1121931}{1625}$	$\frac{601692057}{371293}$	$\frac{63950067}{21125}$
3 Max. motor shaft diameter	2	2	2	1.5	2	2	2	2
<b>Order Number</b>	118184	134777	134778		134780	118187	134783	134786
1 Reduction	5.4 : 1	24 : 1	104 : 1		455 : 1	850 : 1	1996 : 1	3728 : 1
2 Reduction absolute	$\frac{27}{5}$	$\frac{1539}{65}$	$\frac{87723}{845}$		$\frac{5000211}{10985}$	$\frac{531441}{625}$	$\frac{285012027}{142805}$	$\frac{30292137}{8125}$
3 Max. motor shaft diameter	1.5	2	2		2	1.5	2	2
<b>Order Number</b>		118185	134779		134781		134784	118188
1 Reduction		29 : 1	128 : 1		561 : 1		2458 : 1	4592 : 1
2 Reduction absolute		$\frac{729}{25}$	$\frac{41553}{325}$		$\frac{2368521}{4225}$		$\frac{135005697}{54925}$	$\frac{14348907}{3125}$
3 Max. motor shaft diameter		1.5	2		2		2	1.5
4 Number of stages	1	2	3	3	4	4	5	5
5 Max. continuous torque	Nm 0.10	0.15	0.20	0.20	0.25	0.25	0.30	0.30
6 Intermittently permissible torque at gear output	Nm 0.150	0.225	0.300	0.300	0.375	0.375	0.450	0.450
7 Max. efficiency	% 90	81	73	73	65	65	59	59
8 Weight	g 20	23	27	27	31	31	35	35
9 Average backlash no load	° 1.4	1.6	2.0	2.0	2.4	2.4	3.0	3.0
10 Mass inertia	gcm <sup>2</sup> 0.07	0.05	0.05	0.04	0.05	0.05	0.05	0.05
11 Gearhead length L1	mm 15.5	19.1	22.7	22.7	26.3	26.3	29.9	29.9



## maxon Modular System

+ Motor	Page	+ Sensor/Brake	Page	Overall length [mm] = Motor length + gearhead length + (sensor / brake) + assembly parts							
RE 16, 2 W	72			37.9	41.5	45.1	45.1	48.7	48.7	52.3	52.3
RE 16, 2 W	72	MR	258/260	43.6	47.2	50.8	50.8	54.4	54.4	58.0	58.0
RE 16, 3.2 W	73/74			56.0	59.6	63.2	63.2	66.8	66.8	70.4	70.4
RE 16, 3.2 W	74	MR	258/260	61.0	64.6	68.2	68.2	71.8	71.8	75.4	75.4
RE 16, 3.2 W	74	MEnc 13	274	62.1	65.7	69.3	69.3	72.9	72.9	76.5	76.5
RE 16, 4.5 W	75/76			59.0	62.6	66.2	66.2	69.8	69.8	73.4	73.4
RE 16, 4.5 W	76	MR	258/260	64.0	67.6	71.2	71.2	74.8	74.8	78.4	78.4
RE 16, 4.5 W	76	MEnc 13	274	65.1	68.7	72.3	72.3	75.9	75.9	79.5	79.5
A-max 16	89-92			41.0	44.6	48.2	48.2	51.8	51.8	55.4	55.4
A-max 16	90/92	MR	258/260	46.0	49.6	53.2	53.2	56.8	56.8	60.4	60.4
A-max 16	90/92	MEnc 13	274	49.1	52.7	56.3	56.3	59.9	59.9	63.5	63.5
RE-max 17	119-122			41.0	44.6	48.2	48.2	51.8	51.8	55.4	55.4
RE-max 17	120/122	MR	258/260	46.0	49.6	53.2	53.2	56.8	56.8	60.4	60.4
EC 16, 30 W	145			55.6	59.2	62.8	62.8	66.4	66.4	70.0	70.0
EC 16, 30 W	145	MR	261	65.7	69.3	72.9	72.9	76.5	76.5	80.1	80.1
EC-max 16, 5 W	161			39.6	43.2	46.8	46.8	50.4	50.4	54.0	54.0
EC-max 16, 5 W	161	MR	261	46.9	50.5	54.1	54.1	57.7	57.7	61.3	61.3
EC-max 16, 2-wire	162			49.1	52.7	56.3	56.3	59.9	59.9	63.5	63.5

## Option Ball Bearing



	Order Number		Technical Data	
4.4 : 1	138333	455 : 1	138343	Planetary Gearhead
5.4 : 1	138334	561 : 1	138344	Output shaft
19 : 1	138335	690 : 1	138345	Bearing at output
24 : 1	138336	850 : 1	138346	Radial play, 6 mm from flange
29 : 1	138337	1621 : 1	138347	Axial play at axial load
84 : 1	138338	1996 : 1	138348	Max. permissible axial load
104 : 1	138339	2458 : 1	138349	Max. permissible force for press fits
128 : 1	138340	3027 : 1	138350	Sense of rotation, drive to output
157 : 1	138341	3728 : 1	138351	Recommended input speed
370 : 1	138342	4592 : 1	138352	Recommended temperature range
				Extended range as option
				Number of stages
				Max. radial load, 6 mm from flange
				Gearhead values according to sleeve bearing version

maxon gear