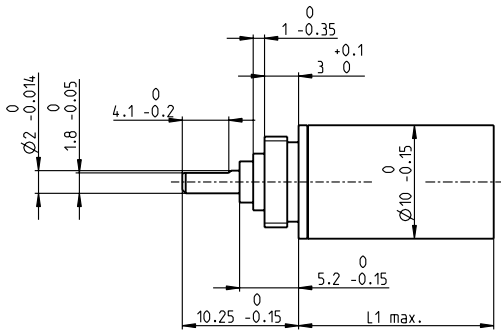


Planetary Gearhead GP 10 A $\varnothing 10$ mm, 0.01 - 0.15 Nm



M 1.5:1

Technical Data

Planetary Gearhead	straight teeth
Output shaft	stainless steel
Bearing at output	preloaded ball bearings
Radial play, 5 mm from flange	max. 0.08 mm
Axial play at axial load	< 2 N 0 mm > 2 N max. 0.04 mm
Max. permissible axial load	5 N
Max. permissible force for press fits	10 N
Sense of rotation, drive to output	=
Recommended input speed	< 12000 rpm
Recommended temperature range	-15 ... +80°C
Extended range as option	-40 ... +100°C
Number of stages	1 2 3 4 5
Max. radial load, 5 mm from flange	5 N 10 N 15 N 20 N 25 N

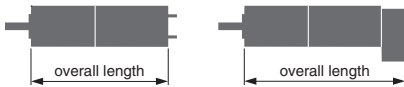
- Stock program
- Standard program
- Special program (on request)

Order Number

218415	218416	218417	218418	218419	332422	332423	332424	332425	332426
--------	--------	--------	--------	--------	--------	--------	--------	--------	--------

Gearhead Data

		4 : 1	16 : 1	64 : 1	256 : 1	1024:1	4 : 1	16 : 1	64 : 1	256 : 1	1024:1
1 Reduction		4 : 1	16 : 1	64 : 1	256 : 1	1024:1	4 : 1	16 : 1	64 : 1	256 : 1	1024:1
2 Reduction absolute		4	16	64	256	1024	4	16	64	256	1024
3 Max. motor shaft diameter	mm	1.2	1.2	1.2	1.2	1.2	1.2	1.2	1.2	1.2	1.2
4 Number of stages		1	2	3	4	5	1	2	3	4	5
5 Max. continuous torque	Nm	0.010	0.030	0.100	0.150	0.150	0.010	0.030	0.100	0.150	0.150
6 Intermittently permissible torque at gear output	Nm	0.020	0.050	0.150	0.200	0.200	0.020	0.050	0.150	0.200	0.200
7 Max. efficiency	%	90	81	73	65	59	90	81	73	65	59
8 Weight	g	6.7	7.2	7.7	8.2	8.7	6.7	7.2	7.7	8.2	8.7
9 Average backlash no load	°	1.5	1.8	2.0	2.2	2.5	1.5	1.8	2.0	2.2	2.5
10 Mass inertia	gcm ²	0.005	0.005	0.005	0.005	0.005	0.005	0.005	0.005	0.005	0.005
11 Gearhead length L1	mm	10.4	14.1	17.2	20.4	23.5	10.4	14.1	17.2	20.4	23.5



maxon Modular System

+ Motor	Page	+ Sensor/Brake	Page	Overall length [mm] = Motor length + gearhead length + (sensor / brake) + assembly parts								
RE 10, 0.75 W	52/53			27.5	31.2	34.3	37.5	40.6				
RE 10, 0.75 W	53	MR	255/256	33.3	37.0	40.1	43.3	46.4				
RE 10, 0.75 W	53	MEnc 10	273	35.6	39.3	42.4	45.6	48.7				
RE 10 1.5 W	54/55			35.1	38.8	41.9	45.1	48.2				
RE 10 1.5 W	55	MR	255/256	40.9	44.6	47.7	50.9	54.0				
RE 10, 1.5 W	55	MEnc 10	273	43.2	46.9	50.0	53.2	56.3				
A-max 12	87/88			31.7	35.4	38.5	41.7	44.8				
A-max 12, 0.5 W	88	MR	255/256	35.8	39.5	42.6	45.8	48.9				
EC 10, 8 W	140								36.2	39.9	43.0	46.2 49.3
EC 9.2 flat, 0.5 W	180			23.0	26.7	29.8	33.0	36.1				