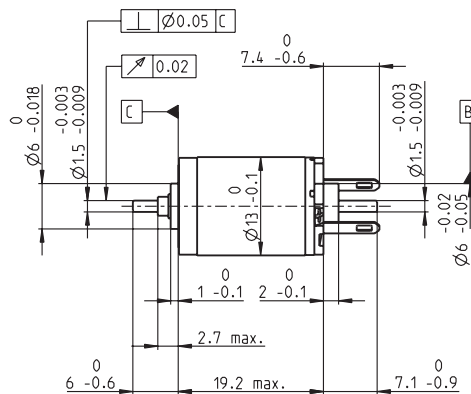
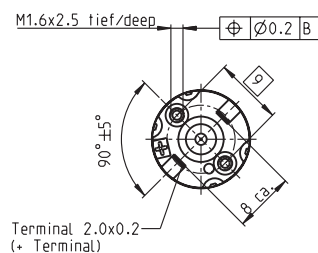


RE 13 \varnothing 13 mm, Precious Metal Brushes, 0.75 Watt, $\text{C}\epsilon$ approved



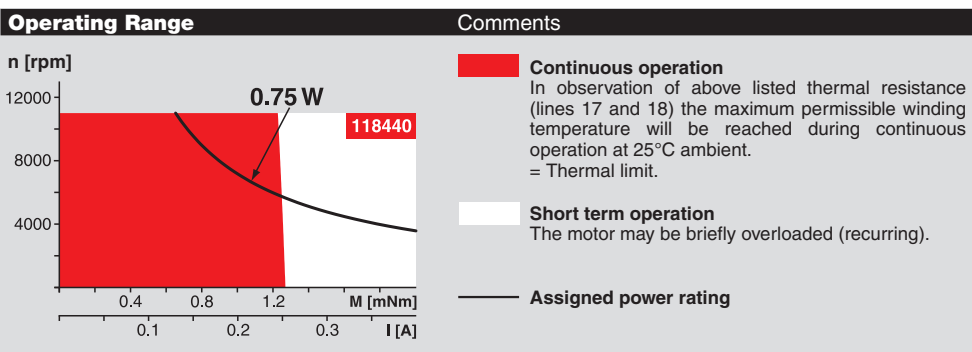
M 1:1

- Stock program
- Standard program
- Special program (on request)

Order Number														
118431	118432	118433	118434	118435	118436	118437	118438	118439	118440	118441	118442	118443	118444	118445

Motor Data																	
Values at nominal voltage																	
1	Nominal voltage	V	0.6	0.72	0.9	1.2	1.5	1.8	1.8	2.4	3.0	3.6	4.8	6.0	6.0	7.2	10.0
2	No load speed	rpm	6860	6680	6580	7240	6990	6850	5960	6490	6700	6490	6950	7010	6540	6660	7040
3	No load current	mA	88.1	71.6	56.1	47.3	36.2	29.4	24.7	20.6	17.1	13.7	11.2	9.06	8.34	7.09	5.47
4	Nominal speed	rpm	4810	3690	2940	2690	1460	1490	2980	1560	1390	1500	1620	1620	1430	3330	1590
5	Nominal torque (max. continuous torque)	mNm	0.512	0.643	0.838	1.03	1.27	1.31	0.774	1.27	1.32	1.25	1.32	1.30	1.21	0.799	1.29
6	Nominal current (max. continuous current)	A	0.720	0.720	0.720	0.720	0.674	0.568	0.302	0.391	0.337	0.257	0.217	0.173	0.151	0.087	0.103
7	Stall torque	mNm	1.77	1.49	1.57	1.69	1.65	1.72	1.60	1.72	1.72	1.68	1.77	1.75	1.60	1.65	1.72
8	Starting current	A	2.21	1.52	1.26	1.12	0.843	0.717	0.579	0.509	0.420	0.331	0.280	0.223	0.191	0.167	0.132
9	Max. efficiency	%	64	62	63	64	63	64	63	64	64	64	64	64	63	63	64
Characteristics																	
10	Terminal resistance	Ω	0.272	0.474	0.716	1.07	1.78	2.51	3.11	4.72	7.14	10.9	17.1	26.9	31.4	43.1	75.8
11	Terminal inductance	mH	0.0061	0.0091	0.0147	0.0216	0.0362	0.0545	0.0719	0.108	0.158	0.243	0.377	0.579	0.661	0.921	1.59
12	Torque constant	mNm / A	0.802	0.980	1.25	1.51	1.96	2.41	2.76	3.39	4.10	5.08	6.33	7.84	8.38	9.89	13.0
13	Speed constant	rpm / V	11900	9740	7650	6300	4870	3970	3460	2820	2330	1880	1510	1220	1140	965	734
14	Speed / torque gradient	rpm / mNm	4040	4710	4390	4470	4420	4140	3890	3930	4060	4030	4090	4180	4270	4210	4270
15	Mechanical time constant	ms	15.1	14.3	13.7	13.5	13.3	13.1	12.9	12.9	12.9	12.9	13.0	13.1	13.0	13.0	13.1
16	Rotor inertia	gcm ²	0.356	0.290	0.298	0.288	0.287	0.301	0.317	0.313	0.305	0.306	0.303	0.298	0.292	0.295	0.292

Specifications		
Thermal data		
17	Thermal resistance housing-ambient	46 K / W
18	Thermal resistance winding-housing	14 K / W
19	Thermal time constant winding	5.14 s
20	Thermal time constant motor	345 s
21	Ambient temperature	-20 ... +65°C
22	Max. permissible winding temperature	+85°C
Mechanical data (sleeve bearings)		
23	Max. permissible speed	11000 rpm
24	Axial play	0.05 - 0.15 mm
25	Radial play	0.014 mm
26	Max. axial load (dynamic)	0.8 N
27	Max. force for press fits (static)	15 N
	(static, shaft supported)	170 N
28	Max. radial loading, 5 mm from flange	1.4 N
Other specifications		
29	Number of pole pairs	1
30	Number of commutator segments	7
31	Weight of motor	15 g



maxon Modular System	Overview on page 16 - 21
<p>Recommended Electronics: LSC 30/2 Page 282 EPOS2 Module 36/2 304 Notes 18</p>	<p>Encoder MR 16 Imp., 2 channels Page 255</p> <p>Encoder MR 64 - 256 Imp., 2 channels Page 256 / 257</p> <p>Encoder MENC \varnothing13 mm 16 Imp., 2 channels Page 274</p>