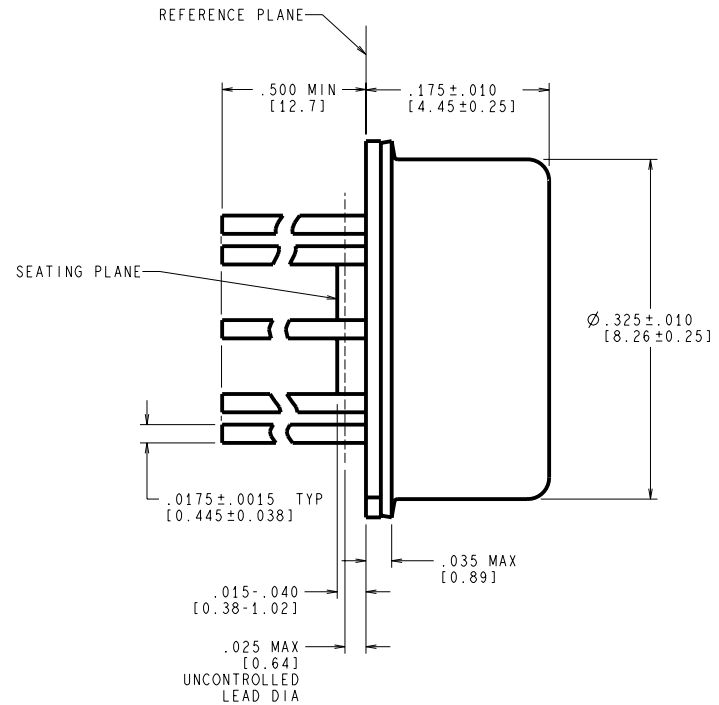
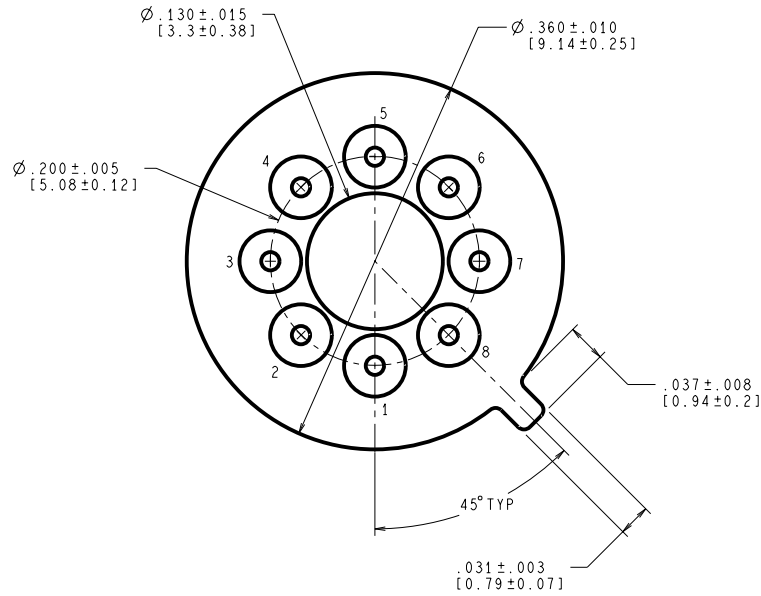


REVISIONS				
LTR	DESCRIPTION	E.C.N.	DATE	BY/APP'D
F	REVISE & REDRAW PER CURRENT STANDARD; UPDATE MIL/AERO STAMP & TITLE.	11002	06/22/95	MS/



CONTROLLING DIMENSION IS INCH
VALUES IN [] ARE MILLIMETERS

MIL-I-38535
CONFIGURATION CONTROL

NOTES: UNLESS OTHERWISE SPECIFIED

- LEADS TO BE LOCATED WITHIN .007 IN/ 0.18 mm OF THEIR TRUE POSITIONS RELATIVE TO A MAXIMUM WIDTH TAB.
- STANDARD METAL CAN TYPE: SOLID BASE WITH CERAMIC STANDOFF.
- APPLIES TO MIL-AERO AND LINEAR PRODUCTS.
- REFERENCE JEDEC REGISTRATION TO-99, JEDEC PUBLICATION No.95.

APPROVALS	DATE	National Semiconductor			
DRAWN MARTA SUCHY	06/22/95	2900 Semiconductor dr., Santa Clara, CA 95052-8090			
DFTG. CHK.		METAL CAN, TO-99, 8 LEAD, .200 DIA P.C.			
ENGR. CHK.					
 PROJECTION INCH [MM]		SCALE N/A	SIZE C	DRAWING NUMBER MKT-H08C	REV F
DO NOT SCALE DRAWING SHEET 1 of 1					