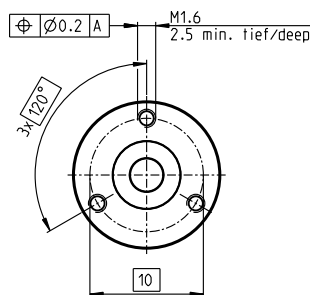
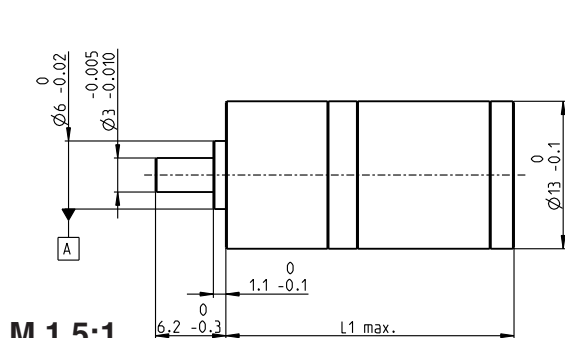


# Planetary Gearhead GP 13 M Ø13 mm, 0.05–0.275 Nm

Sterilizable



## Technical Data

Planetary Gearhead	straight teeth
Output shaft	stainless steel
Bearing at output	ball bearing
Radial play, 0.24 in from flange	max. 0.2 mm
Axial play	max. 0.1 mm
Max. permissible axial load	50 N
Max. permissible force for press fits	80 N
Sense of rotation, drive to output	=
Recommended input speed	< 60 000 rpm
Recommended temperature range	-40 ... +100°C
with shaft seal	-10 ... +100°C
Number of stages	1 2 3
Max. radial load, 6 mm from flange	10 N 15 N 20 N

Option: Inch-version GP size 5 M as standard variant available.

- Stock program
- Standard program
- Special program (on request)

## Order Number

with shaft seal  
without shaft seal

370275	370517	370611
370617	370622	370623

## Gearhead Data (provisional)

1 Reduction		5 : 1	25 : 1	125 : 1
2 Reduction absolute		$\frac{5}{1}$	$\frac{25}{1}$	$\frac{125}{1}$
3 Max. motor shaft diameter	mm	1.5	1.5	1.5
4 Number of stages		1	2	3
5 Max. continuous torque	Nm	0.05	0.225	0.275
6 Intermittently permissible torque at gear output	Nm	0.1	0.25	0.3
7 Max. efficiency, sealed	%	85	80	70
8 Weight	g	16	20	23
9 Average backlash no load	°	1.2	1.4	1.6
10 Mass inertia	gcm <sup>2</sup>	0.017	0.016	0.016
11 Gearhead length L1	mm	25.4	31.3	37.2
13 Max. transferable continuous performance	W	30	20	15
14 Max. transferable intermittent performance	W	40	25	20

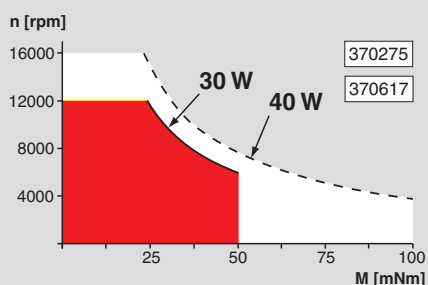


## maxon Modular System

+ Motor	Page	+ Sensor/Brake	Page	Overall length [mm] = Motor length + gearhead length + (sensor / brake) + assembly parts		
EC 13, 30 W, ster.	143			62.5	68.4	74.3
EC 13, 50 W, ster.	144			73.5	79.4	85.3

## Operating Range (Output shaft)

## Comments



### Continuous operating

Valid in an ambient temperature of 25°C and taking account of stage-dependent limits (points 5 and 13). The recommended motor speed must not be exceeded.

### Short term operation

Valid in an ambient temperature of 25°C and taking account of stage-dependent limits (points 6 and 14). This range may be used intermittently and repeatedly. It is defined as follows

- during max. 1 second
- during max. 10% of the operating cycle

— max. transferable continuous performance

----- max. transferable intermittent performance

## Application



Medicine / surgery / chemicals

Hand tools such as bone saws, bone drilling and grinding machine can be sterilized.

Dermatological and dental tools

Infusion pumps

ECG

Therapy aid, analysis and dialysis equipment

## Sterilization information

In normal use, the motor-gearhead-combination with shaft seal can be sterilized 500 times in an autoclave. No need to dismantle. Without shaft seal, the number of cycles is reduced.

Sterilization with steam

Temperature +134°C ± 4°C

Compression pressure up to 2.3 bar

Rel. humidity 100 %

Cycle length 20 minutes